

# how to...



## Roman Blind Child Safety

This HOW TO will guide you through the devices and how you can use them to make a fully compliant roman blind system. For your peace of mind all of the products have been tested externally by Bureau Veritas and the Hallis Hudson team. To view and download our the up to date safety certificates visit [hallishudson.com](http://hallishudson.com)



Rear Cord Breakaway Devices



Chain Breakaway Devices



Chain Tension Devices



Wooden Batten Safety Devices



## Rear Cord Breakaway Devices...

When creating Roman Blind panels over 20cm deep rear cord breakaway devices are required on each cord. The choice of device will be influenced by the blind weight, whether you are using roman blind tape or creating pockets and what you like the look of on the back of your finished blind.

### Choices when using roman blind tape...

All of our clip on rear cord breakaway devices have been tested and approved with all of the Roman Blind Tapes in the Hallis Hudson range.

### Clip on rear cord breakaway toggle...



**1.** The Clip On Rear Cord Breakaway Device simply clips onto your roman blind tape at the last point on your blind.

**2.** The toggle is easy to use needing just a gentle squeeze to open it to pass the cord through the hole.

**3.** The blind level can then be altered by adjusting the toggle.



## Clip on rear cord breakaway...



**There are 2 options of how to use Clip On Rear Cord Breakaway (0938R):**

### **Option without a toggle...**

1. Use on the last 2 pockets of the blind (the legislation states the last 2 pockets need to breakaway). For total peace of mind the device can be used at every point on the blind.
2. Once clipped onto the tape, simply pass the cord through the barrel of the device and double knot at the correct level.

### **Option to use with a standard toggle...**

1. For easy adjustment of your blind you can use an Adjustable Toggle (0988R) on the last pocket on your blind, below the safety device.
2. Simply thread the cord through the last barrel and then through the Adjustable Toggle and secure with a double knot.



## Choices when making your own pockets...

When creating your own rod pockets there are a choice of rear cord breakaway devices that can be sewn onto your blind to make it safe.

## Sew on rear cord breakaway toggle...



*The slot to sew/tie the device on has been generously sized to make it easy to work with.*

1. The Sew on Rear Cord Breakaway Toggle can be sewn or tied onto the last pocket of your roman blind.

2. The toggle is easy to use, needing just a gentle squeeze to open it and pass the cord through the hole. The blind level can then be altered by adjusting the toggle.



# Sew on rear cord breakaway...



**There are 3 options of how to use 'A' Style Rear Cord Breakaway Device.**

## **Option without a toggle...**

**1.** Use on the last 2 pockets of the blind (the legislation states the last 2 pockets need to breakaway). For total peace of mind the device can be used at every point on the blind.

**2.** To sew the rear cord breakaway to your blind simply pass your thread through the cut out and sew all the way along so the device is securely attached and sits level on the pocket.

## **Option to use with a standard toggle...**

**1.** The toggle is easy to use, needing just a gentle squeeze to open it and pass the cord through the hole. The blind level can then be altered by adjusting the toggle.

**2.** Simply thread the cord through the last barrel and then through the Adjustable Toggle and secure with a double knot.

## **Option to use 1 sew on with rings...**

**When using the A Style Rear Cord Breakaway Device in combination with 13mm (0849R) rings it must be fitted at every point where the cord meets the rod pocket with the rings sewn on at every point above.**

**1.** To sew the rear cord breakaway to your blind simply pass your thread through the cut out and sew all the way along so the device is securely attached and sits level on the pocket.

**2.** Sew on your 13mm blind rings at every point above the A Style Rear Cord Breakaway.

**3.** Simply thread your cord through each of the rings then through the small eye on the top of the rear cord breakaway and tie with a double knot.

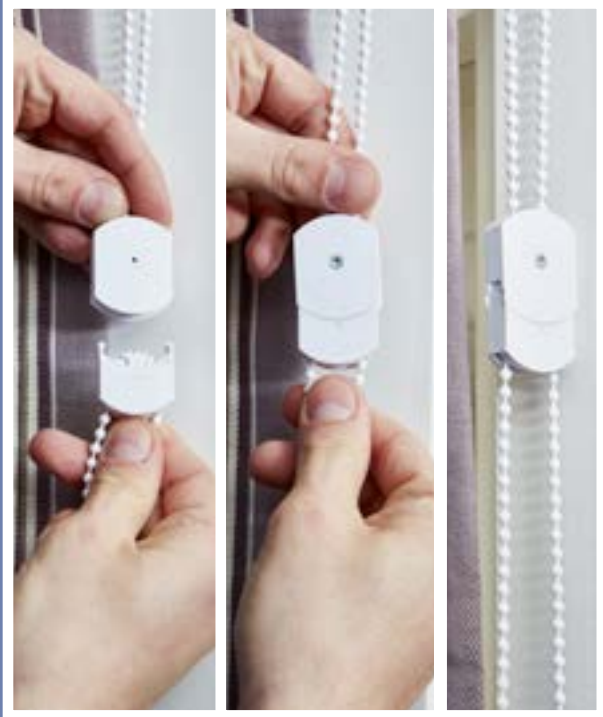


**IMPORTANT NOTE** - this method must not be used with a toggle as it will not pass through the rings.

# Chain Breakaway Devices...

Using a Chain Breakaway Device allows you to use a chain length of up to 60cm from the ground and removes the need to fit a chain tension device, helping overcome this common customer objection.

## Chain Breakaway Device...



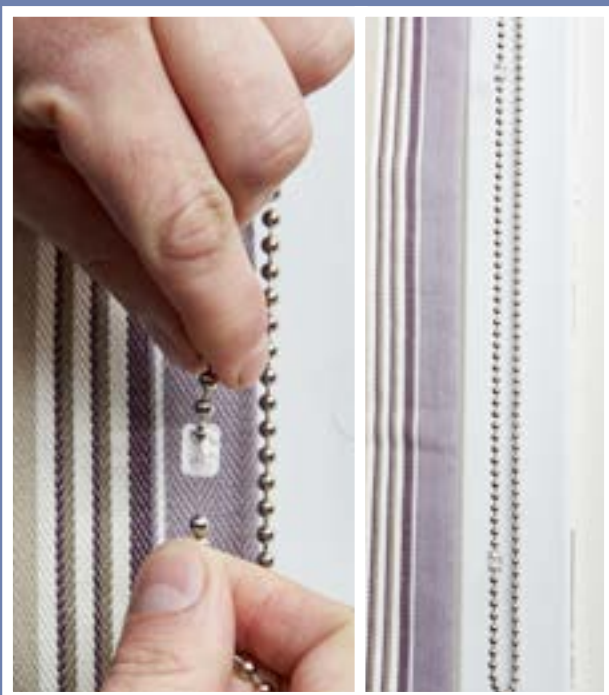
**The Hallis Chain Breakaway Device is the perfect alternative to a chain tension device, allowing your chain to be fitted as low as 60cm from the ground.**



This device comes in two parts and a small bolt to connect to you gear housing with the bottom chain loop (not supplied), to allow you to fit your chosen length of plastic chain. To work out the size of chain you need just deduct 20cm from your total chain drop to accommodate the device.

1. Fit your chain into the bottom section and attach both parts together then connect to the gear housing on your blind.
2. The breakaway section tilts to allow you to raise and lower your blind with ease whilst not breaking away in normal operation. When it breaks away it is simple to click the two sections back together with 2 arrows to guide the end user on reconnecting, helping avoid costly call outs.

## Chain Breakaway Connector...



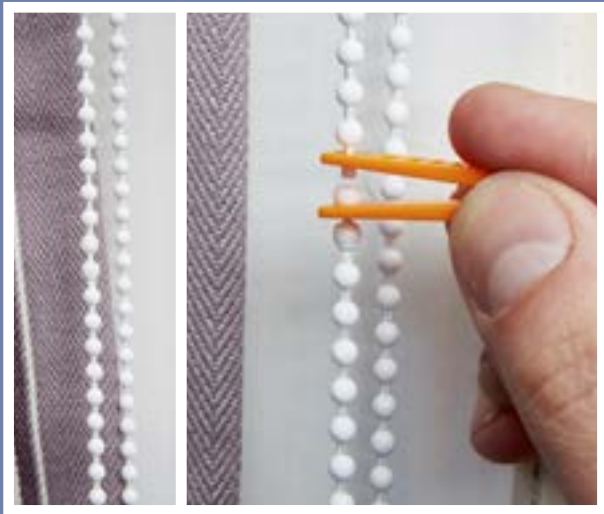
**The Chain Breakaway Connector can be used instead of a Chain Tension Device and allows you to have a chain length of up to 60cm from the ground. It is only suitable for no.10 chains (all Hallis chains are no.10) and on 1:1 gear ratios.**



1. Cut your chain to the length required and join together with the chain breakaway connector. When used on metal chain, two breakaways are required, spaced at least 20cm apart. When used on plastic chain, only one device is required.
2. The device works best when you pull the chain from above the breakaway.

If your chain breaks away it is easy to reconnect with a simple click into place.

## Continuous Chain Breakaway...



The Continuous Chain Breakaway has two slightly different coloured balls built into it which breakaway. The device is suitable for light weight blinds up to 2kg.



1. Replace your standard no.10 chain with the continuous chain breakaway on your roman blind.
2. When the chain breaks it is easy to put back together using the orange tool supplied.

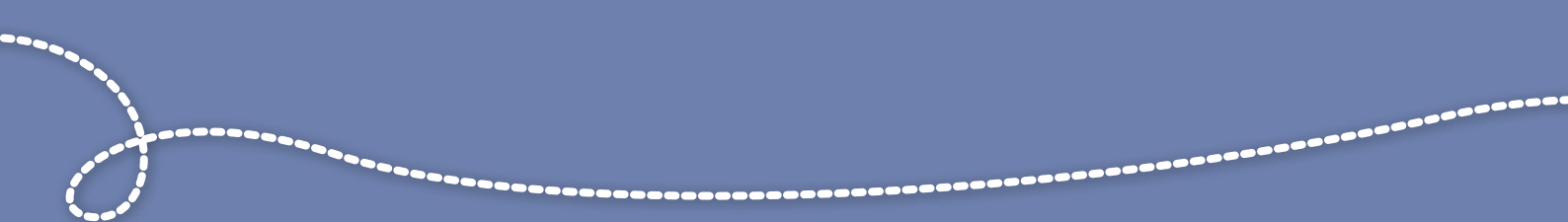
## Chain Tension Devices...



When using a standard roman blind chain, a chain tension device needs to be fitted at least 150cm from the ground as the legislation states.

There are two chain tension devices available depending if you are fitting inside or outside of the recess.

1. Attach your chain to the chain tension device and fix securely against the wall or window frame ensuring your chain is kept tight.



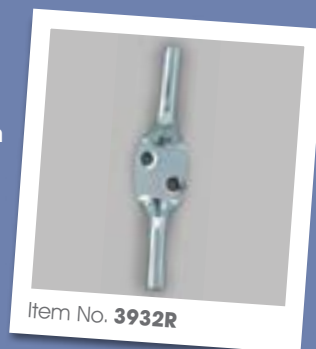
# Wooden Batten Roman Blind Devices...

The Wooden Batten Roman Blind creates a stunning finished product with the added advantage of having a fabric covered 'headrail' to get a fully coordinated look. The below devices enable you to create an approved system along with our how to guide on making your blind (see pages 18 to 21).

## Cleats...



**Cleats are required to take up all of the cord on your blind, by wrapping all of the cord around the cleat it holds your blind in position as well as eliminating any hazardous loops.**



1. Fix your cleat to the wall no less than 150cm from the ground, wrap all of your cord around the cleat.
2. If all of the cords will not fit round one cleat, fit a second cleat next to or above to take the remainder of the cords.

## Cord Breakaway Tassel...



**The Cord Breakaway Tassel is used to gather all of the cords together and breakaway into two halves when excessive force has been applied, removing the hazardous loop.**



When using up to four cords on your blind simply thread the cords evenly into each half of the device, then tie each cord with a knot, insert your operating cord and close the two halves together.

If you have more than four cords a normal cord connector can be used but it must be positioned less than 5cm from the headrail when the blind is in its lowest position. Technically the legislation states that a cord connector is not required when more than 4 cords are used but good practice supports removing the danger as much as possible.

# Child safety warning labels...

In order to supply a Compliant Roman Blind to the end customer you need to ensure that all the necessary warning labels are included and fitted correctly. You can use these labels in combination with all approved roman blind and wooden batten components available from Hallis Hudson to make a fully child safe blind. These may be put in place prior to sending out or at the point of fitting the blind in situ. For your peace of mind our Professional & Value Roman Blind systems come with these labels included as standard.

## General warning label...

Attach the general warning label to your roman blind chain.



## Safety device label...

Fix your chain tension device or cleat to your chain then attach the safety device label to your chain tension device.



## Self adhesive warning label...



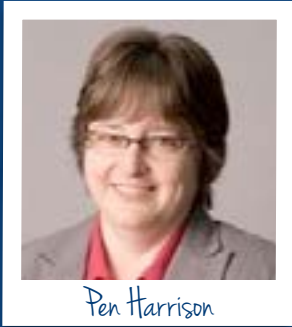
Once you have assembled and packed your blind system attach the self adhesive warning label on the outer packaging in the middle.



HALLIS HUDSON

# how to...

## make a wooden batten corded roman blind



Pen Harrison

Pen runs Colly Brook Fine Furnishings based in Tenbury Wells, Worcestershire. Nestled happily in the beautiful Teme valley for nearly 20 years, they provide a specialist range of bespoke home styling services for the more discerning client.

### Materials and components you need to make a fully compliant child safe\* blind system...

- Wooden Batten the width of the blind
- Angle Brackets (3468R, 3469R)
- Fabric (pictured iLiv Botanica/Willow)
- Lining
- Interlining
- Trimmings (optional, we used Jazz 2648R/06)
- Rear Cord Breakaways (0958R\*)
- Other Hallis rear cord breakaway devices are approved for use with the wood batten system.
- Roman Blind Roads (2246R/300)
- 13mm Rings (0849R/15\* and 0849R/200\*)
- Touch & Close Tape (self-adhesive hook and sew-on loop) (2005R and 2004R)
- Cleat(s) (3932R\*)
- Bottom Weight Bar (0979R/300)
- **NEW** 1.3mm Blind Cord (10028R)
- Breakaway Tassel (0850R\*)
- Cord Weight (3548R)
- Warning Labels (0801R/25\*, 0802R/25\* and 0803R/25\*)
- Cord guides or vine eyes (3929R and 3736R)

\* must be used in order for the system to be fully compliant



### Tools you need...

- ✓ Staple Gun & Staples
- ✓ Scissors
- ✓ Sewing Kit
- ✓ Bradawl screws and screwdriver to attach the batten

# how to

1.



## 1. Prepare the batten

Cut the wooden batten to the finished width of the blind. Cut a strip of fabric long enough to wrap round all sides of the batten and the ends (if the blind is going into a recess then a strip of lining can be used instead). Put the fabric face down on the table and centre the batten on it. Fold the fabric over one long edge onto the back of the wood and staple in place, starting in the middle and working to the ends.

2.



## 2. Cover the batten

At each end of the batten, fold the end of the fabric over and wrap the batten like a parcel. Keep the excess fabric on the top and bottom of the wood, rather than the end, to reduce bulk, trim if necessary. Bring the other side of the fabric up over the batten and fold under the raw edge. Staple in place on the back of the batten.

3.



## 3. Fix the tape

Cut the touch and close, self adhesive hook tape to length and stick it to the back of the covered batten, staple in place for extra security.

4.



## 4. Attach the guides

To affix the cord guides or vine eyes (we used vine eyes), measure 5cm in from each end on the bottom of the batten. Divide the length of the batten between these two points evenly (no more than 30cm apart) and attach a cord guide or vine eye at each position. Add an extra one on the right hand side of the batten (if cording on the right).

5.



## 5a. Prepare the fabric

Cut the blind (face fabric) to the finished width by the finished length, making sure to add all allowances. Cut the lining to the finished width and the finished length, again adding your allowances for seams and rod pockets and finally cut the interlining to the finished width and length of the blind.

## 5b. Calculate the distance between the rod pockets

Take the finished length of the blind and subtract 6.5cm from this measurement. The remaining amount should be divided equally between the rod pockets, with half for the bottom pocket. As a guide the top pocket should be 5cm longer to allow for the folds to stack neatly when raised. The bottom pocket should be half of the other pockets.

### 5c. Prepare the lining

On the right side of the lining, draw a line 4cm from the bottom raw edge for the weight bar pocket, then mark the rod pockets, allowing 2cm for each pocket. On the wrong side, press in 2cm on each side for the side hems. Fold along each pocket line, wrong sides together. Stitch each pocket 1cm from the folded edge. Fold the weight bar pocket to the wrong side along the pencilled line and stitch close to the raw edge.

### 6. Attach the loop tape

Fold over your allowance at the top of the face fabric to the wrong side. Press and open out. Cut the loop tape to the length required and stitch to the right side of the top hem, just above the fold.

### 7. Assemble the fabrics

Put the fabric face down on the table. Centre the interlining on the back of the blind and with the top raw edge up to the fold. Fold in the side hems over the interlining, and stitch in place. Centre the lining wrong side down onto the blind, lining up the bottom fold to the bottom edge of the interlining. Slipstitch the lining to the fabric and hem up the sides, leaving the weight bar pocket unstitched.

### 8. Secure the layers together

Underneath each rod pocket, measure and mark the ring positions to line up with the vine eyes or cord guides on the batten. At each point, use a double thread to stab stitch through all layers and tie off securely. On the bottom pocket stitch a rear cord breakaway device at each stab stitch point. On the remaining rod pockets stitch a 13mm ring at each stab stitch point. In each case, just stitch through the folded edge, to allow the rods to be inserted.

### 9a. Finish the top of the blind

At the top of the blind, turn down the top hem, turn under the raw edge and slip stitch on all three sides, occasionally making a stab stitch through to the face to hold all the layers.

### 9b. Attach trim (optional)

At the bottom of the blind, turn up and lightly press the bottom hem. Turn the fabric over, and on the right side, hand stitch the pompom trim in place, turn the raw ends to the back.



# how to

10.



## 10. Add the weight bar

Insert the weight bar, and turn up the bottom hem. Turn under the raw edge and slipstitch in place, slipstitch the folds closed. Insert the rods into the rod pockets.

11.

## 11. Attach the batten

Put the batten onto the top of the blind, securing the touch and close tape and place face down on the table.

12.



## 12. Breakaway cord tassel

Cut lengths of cord (0176R) and place into the breakaway tassel. Cut a length of thicker cord (3422R/1) for the other end of the breakaway tassel (0850R).

13.



## 13. Cord the blind

With the blind flat on the table, feed the cords through the cord guides or vine eyes from the right, taking one cord down each vertical row of the clear 13mm rings. At the bottom rod pocket, secure each cord to the rear cord breakaway 'A' Style device (0958R) with a double knot (other Hallis rear cord breakaways can be used as an alternative). The rear cord breakaway device is in two sections, the first section has the blind cord threaded through it and secured with the double knot, while the second section is stitched to the bottom rod pocket. Attach a cord weight to the thicker cord (3422R/1) at the desired height.

14.



## 14a. Hang your blind.

Use angle brackets to fix the blind to the wall. Fix a cleat at least 150cm from the ground to wrap the cords round. If all of the cords will not fit round one cleat, fit a second cleat next to or above to take the remainder of the cords.

## 14b. Attach your warning labels

Attach the labels to the rear cord (0801R/25) and the breakaway tassels (0802R/25), then stick the self adhesive label (0803R/25) to the packaging.

Now stand back  
and admire your work!

# We'd love you to get involved today...

What you'd love us to write a How to about

Something you're struggling with and need help

Share your knowledge by writing a How to – we'll help bring it to life

Tips you'd love to share with others

## Get in touch...

Speak to the Sales Team **01772 202 202**  
Email us [news@hallishudson.com](mailto:news@hallishudson.com)

### Chat to us at...

 [www.facebook.com/hallishudson](http://www.facebook.com/hallishudson)

 [www.twitter.com/hallishudson](http://www.twitter.com/hallishudson)

## Tip...

*We place our How to articles on the centre pages to allow you to easily pull them out and keep them for future reference.*