

how to...

fit to your outside recess...

Tools you will need

- Screwdriver

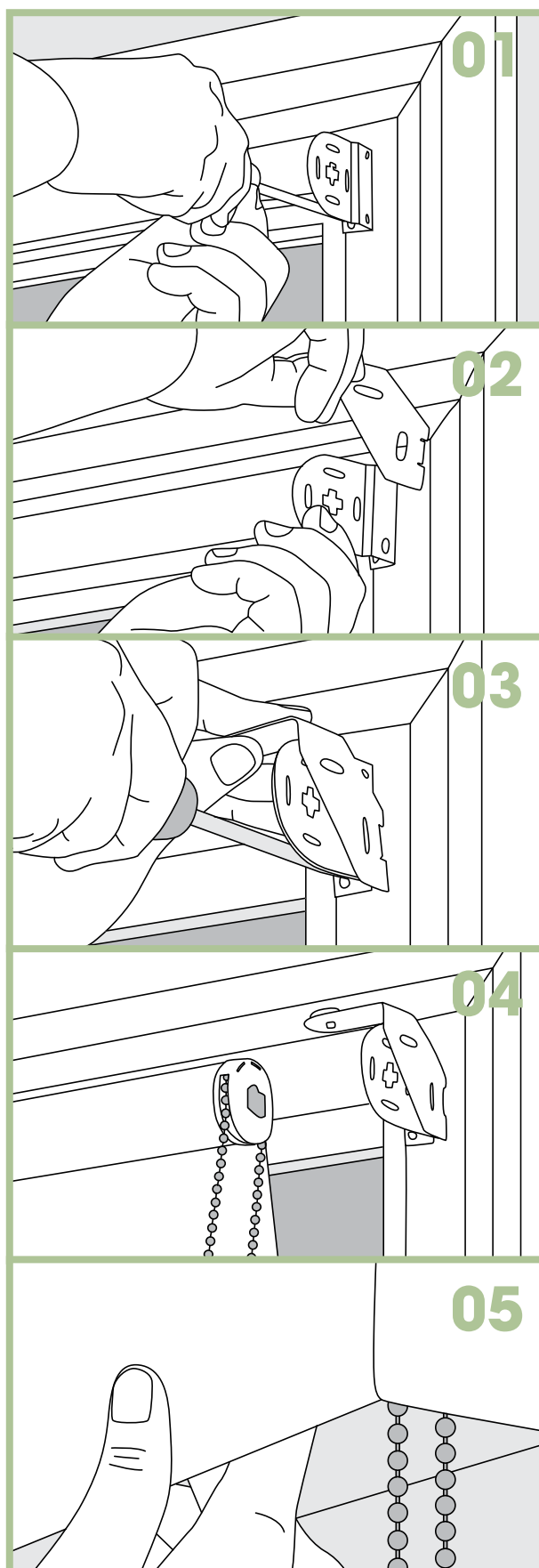
01 Remove your existing roller blind from the brackets then slightly loosen the fixings on your brackets.

02 Slide your new Cov-A-Blind™ bracket behind the existing bracket.

03 Re-tighten your existing fittings ensuring they are held secure.

04 Re-fit your roller blind back onto the brackets.

05 Fit your pelmet over the top to finish installation.



how to...

fit to your inside recess...

Tools you will need

- Screwdriver

- 01** Remove your blind from the fixings on one side.
- 02** Slide your new Cov-A-Blind™ bracket above your existing headrail.
- 03** Re-attach your headrail to the existing brackets.
- 04** Tighten the M4 screw so that the end sits flush with the front of your headrail. Repeat this process for all other brackets.
- 05** Fit your fascia to the front to finish installation.

COV-A-BLIND™

