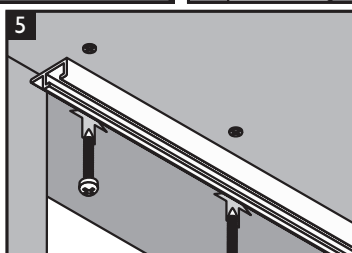
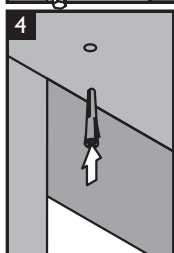
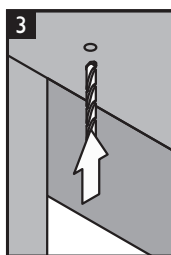
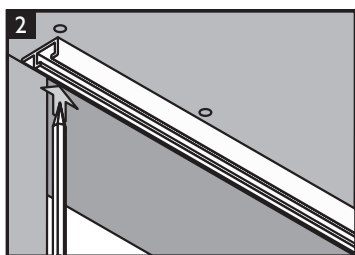
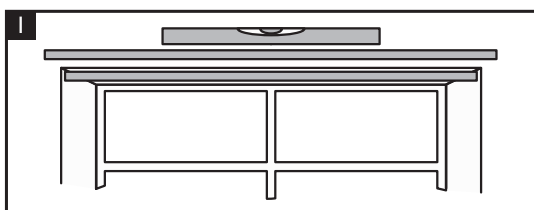
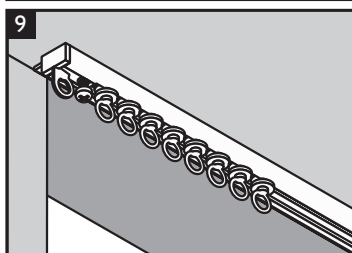
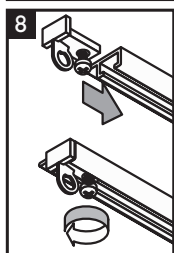
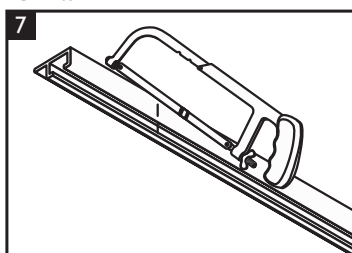
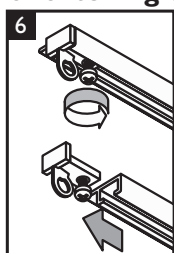


Discreet

Top Fix Fitting Instructions



Shortening the Rail



Safety

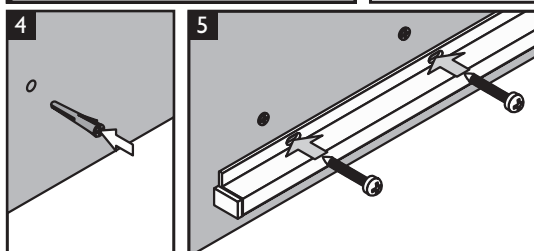
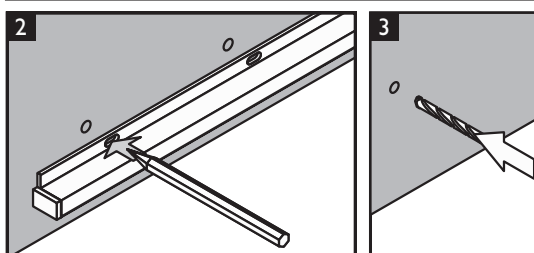
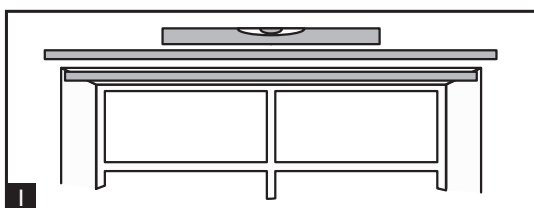
- Only use a step ladder or stable chair to reach the fixing height.
- Do not over reach. Always move the stepladder or chair, so that you are in a safe working position.
- Do not hold or lean on the track to support your weight.
- Use two people for the installation of longer tracks.
- Take care when using power tools, use of a Residual Current Device (RCD) is recommended.
- Always wear eye protection when drilling.
- Beware of hidden pipe runs and cables.

Integra Products Ltd,
Eastern Avenue, Lichfield, Staffordshire WS13 7SB

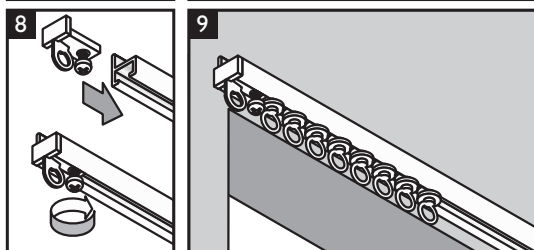
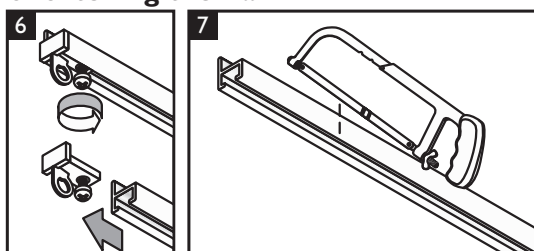
- tel: +44 (0)1543 267100 • fax: +44 (0)1543 267105
- email: cus.care@integra-products.co.uk
- web: www.integra-products.co.uk

Discreet

Face Fix Fitting Instructions



Shortening the Rail



Safety

- Only use a step ladder or stable chair to reach the fixing height.
- Do not over reach. Always move the stepladder or chair, so that you are in a safe working position.
- Do not hold or lean on the track to support your weight.
- Use two people for the installation of longer tracks.
- Take care when using power tools, use of a Residual Current Device (RCD) is recommended.
- Always wear eye protection when drilling.
- Beware of hidden pipe runs and cables.

Integra Products Ltd,
Eastern Avenue, Lichfield, Staffordshire WS13 7SB

- tel: +44 (0)1543 267100 • fax: +44 (0)1543 267105
- email: cus.care@integra-products.co.uk
- web: www.integra-products.co.uk