

# integra

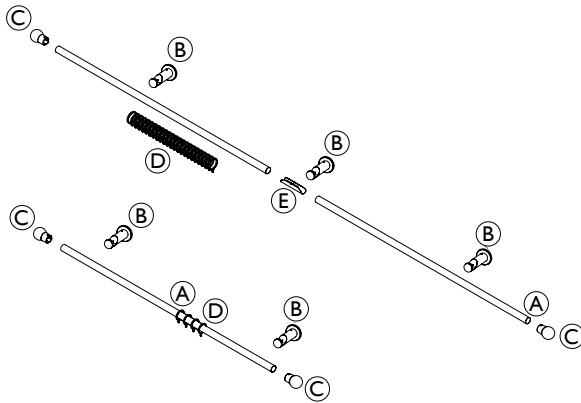
## Elements Pole Kit

### Fitting Instructions

Please read these instructions carefully and check the contents of the pack against the table below before attempting to assemble and install this product. Please ensure the correct wall plugs are used to suit your wall type, if unsure consult your local DIY store.

Should any component be missing, please call the Customer Care Department on 0330 005 2233.

Tools required: Pencil, measure, spirit level, drill, screwdriver, hacksaw and file (if cutting down).



Contents	Pole Length	1.2m	1.5m	1.8m	2.4m	3.0m*	3.0m*	3.6m
A Pole		1	1	1	2	1	2	2
B Bracket		2	2	2	3	3	3	3
C Finial		2	2	2	2	2	2	2
D Rings		12	16	18	24	30	30	36
E Joiner		-	-	-	1	0	1	1

**\*Note: The 3.0m pole is available in both 1 and 2 pieces**

### Safety Recommendation

Always use a step ladder when working at height.

DO NOT over reach. Always move the step ladder so that you are in a safe working position.

DO NOT hold or lean on the pole to support your weight.

We recommend you use two people for installation of a larger poles.

Take care when using power tools, use of a Residual Current Device (RCD) is recommended.

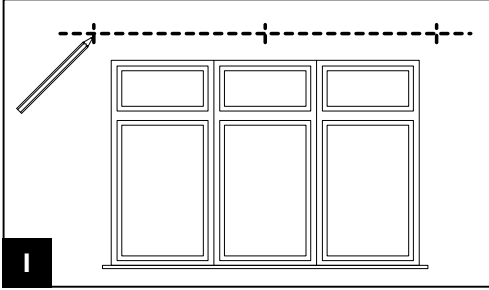
Always use eye protection when drilling. Beware of hidden pipe runs and cables.

No liability will be accepted for damage or injury caused by incorrectly installed or assembled product.

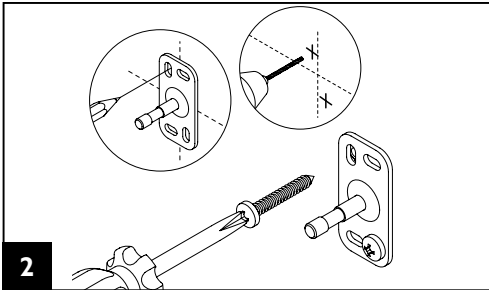
PLEASE KEEP OUT OF THE REACH OF YOUNG CHILDREN. SMALL PARTS - CHOKING HAZARD.  
PLEASE KEEP THESE INSTRUCTIONS AND THE BATCH CODE ON THE PACKAGING FOR FUTURE REFERENCE IN CASE OF ANY QUERIES.

## Installing the brackets

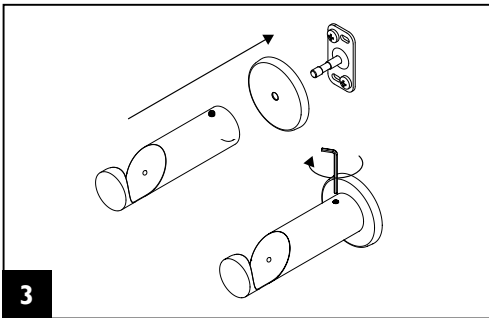
1. Mark a light horizontal line 10cm to 20cm above the window to represent where your pole is going to sit. On your line, mark the end bracket positions 10cm from each side of the window. Mark the centre bracket at the mid-point of the window if necessary. Note: The centre bracket is only required for poles longer than 180cm where two poles are joined together. (fig. 1)



2. On your horizontal line mark the bracket positions using the back plate as a guide. Drill the holes and secure the back plate with the appropriate fixings, if unsure consult your local DIY store. (fig. 2)

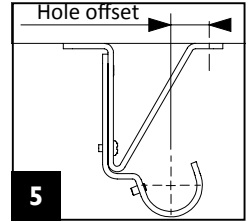
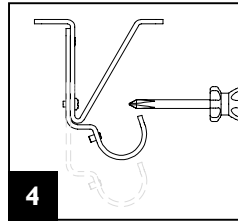


3. Assemble the brackets, push onto the back plates and secure by tightening the grub screw. (fig. 3)



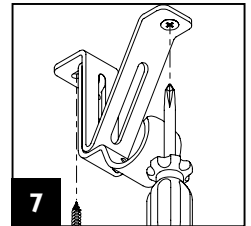
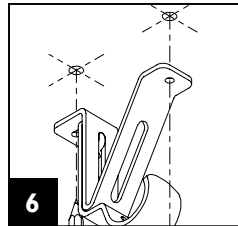
## Ceiling fixing the bracket (part sold separately)

1. The bracket can be adjusted to 3 positions by unscrewing the inner screw completely and tightening it back in the next available position. (fig. 4)
2. Mark a light horizontal line on the ceiling where you want your brackets to be fitted.
3. Mark the front hole position for each bracket offset from the pole centre line previously marked (fig. 5) as per table.

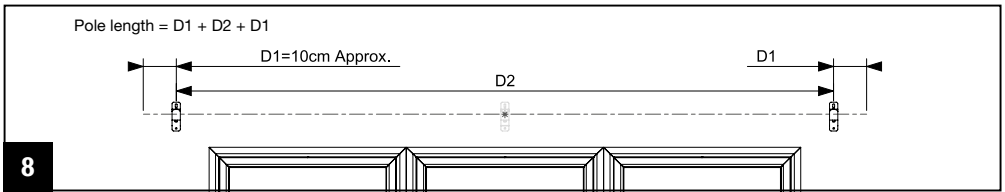


Pole size	Hole offset
28	2.1 cm
35	1.1 cm

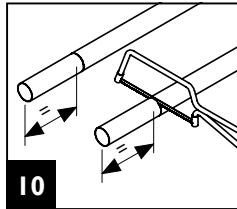
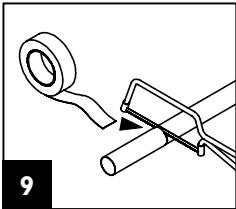
4. Use the bracket as a template to mark the second hole position onto the ceiling. (fig. 6)
5. Drill holes and fit the correct plugs if fixing on masonry ceiling. If in doubt, consult your local DIY store or builder.
6. Fix the bracket using the correct screws. (fig. 7)



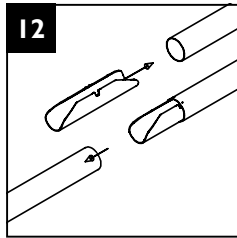
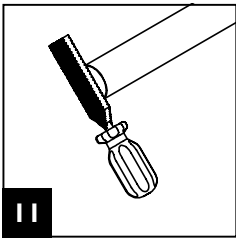
## Preparing the pole (optional)



1. Calculate the length of the pole. (fig. 8)
2. Mark the cut line on the pole. Use masking tape if possible to avoid damaging pole and proceed with the cut. (fig. 9)
3. When using two poles cut equal lengths from each pole. (fig. 10)

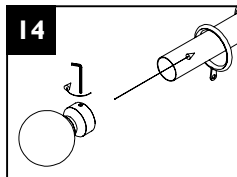
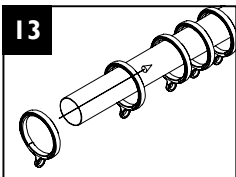


4. File sharp edges to avoid injury or damage to other components. (fig. 11)
5. When using two poles, join them by sliding a joining piece into the uncut end of the first pole then slide the second pole from the uncut end onto the joining piece. Take care to push equal lengths of the joiner into each pole. The pole joints should always be at the half way point of the installation length and supported with a bracket. (fig. 12)

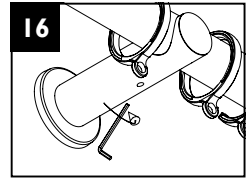
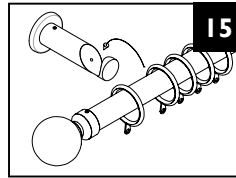


## Installing the pole with rings

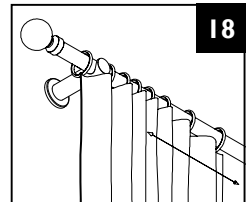
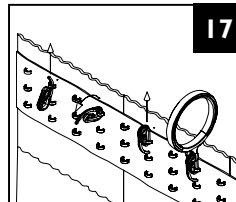
1. Slide the rings onto the pole, approximately 1 ring per 10cm of pole. (fig. 13)
2. Slide the ball finial onto the pole and tighten the grub screw. (fig. 14)



3. Ensure that the grub screw on the brackets are loosened and place the pole(s) in the brackets. One ring should be left in between the end bracket and the finial on each end. If using a centre bracket the ring should be equally distributed on both side of the pole. (fig. 15)
4. Tighten the grub screw on the brackets once you are happy with the installation. (fig. 16)

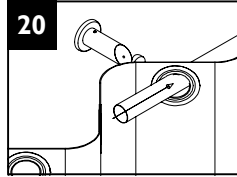
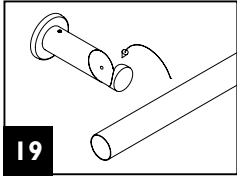


5. Equally space the curtain hooks along curtain header, you will require one hook for every ring, and place the hooks through the eyelet on the ring. (fig. 17)
6. Test the installation by drawing the curtains across. (fig. 18)



## Installing the pole with eyelet or tab curtain

1. Ensure that the grub screw on the brackets are loosened and place the pole(s) in the brackets. (fig. 19)
2. Lift one end of the pole and slide the eyelet/tab onto the pole ensuring that the last eyelet/tab is placed in between the bracket and the end of the pole. Repeat on the other end of the pole. (fig. 20)



3. Slide the ball finial onto the pole and tighten the grub screw (fig. 21).
4. Tighten the grub screw on the brackets once you are happy with the installation (fig. 22).
5. Test the installation by drawing the curtains across (fig. 23).

