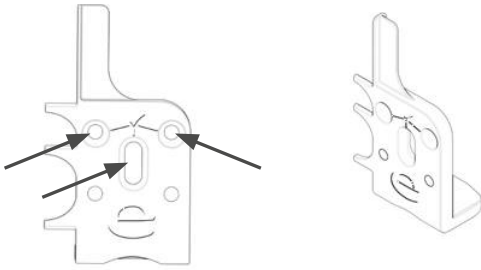


Senses Vertical Outside Recess Face Fix



Fitting Instructions

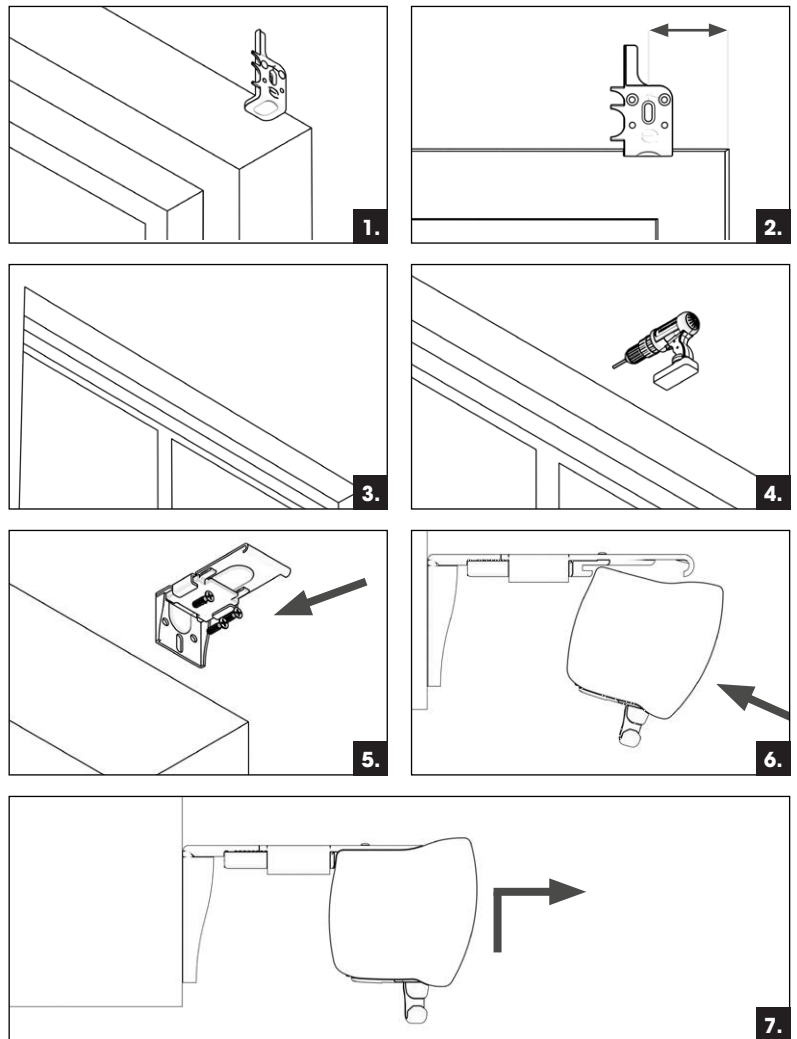


For face fix, the above image shows which locators to use on the fitting tool.

- Step 1.** Position the first bracket position.
- Step 2.** Position the fitting tool 60mm from the edge of the recess and mark with a pen/pencil the locations that needs drilled using the locators shown on previous page.
- Step 3.** Position the remaining bracket(s) spread evenly across the length of the blind. For bracket quantities, see table on next page.
- Step 4.** Using a suitably sized drill bit, drill all marked positions (use wall plugs where appropriate).
- Step 5.** Position face fix bracket, lining up hole locations with drilled holes. Screw bracket in to place and repeat the process for the remaining brackets.
- Step 6.** For both Senses & Nexus, engage the rail into the plastic arms of the bracket.

Step 7. Push the rail into the bracket, until the front of the rail can snap into the metal catch. To disconnect, push the rail into the bracket and twist the rail out of the bracket.

PLEASE NOTE: Always use cord tensioning devices or suitable child safety devices with open chain or cord loops.



SENSES WIDE - BRACKET QUANTITIES	
Width	No. of Brackets Required
< 1350mm	2
1350mm to 2099mm	3
2100mm to 3299mm	4
3300mm to 3999mm	5
4000mm to 5000mm	6

SENSES SLIM - BRACKET QUANTITIES	
Width	No. of Brackets Required
< 1350mm	2
1350mm to 2099mm	3
2100mm to 3299mm	4
3300mm to 4000mm	5