

HALLIS HUDSON

# Signature COLLECTION



MADE TO MEASURE BLINDS  
Technical Guide December 2024

## Child Safety - Aluminium Venetian Blinds

### Standard Cord



Wall Cleat

A cleat is supplied to be installed on the wall. To ensure this option complies with child safety legislation the wall cleat must be no lower than 150cm from the ground.

## Child Safety - Duo Fabric Roller Blinds

### Chain Operated



Chain operated Duo Fabric roller blinds use a single chain to raise and lower the blind.



Chain Tension Device

Chain operated Duo Fabric roller blinds are supplied with a Chain Tension Device to be installed on the wall. To ensure this complies with child safety legislation it must be fitted no lower than 150cm from the ground.



### Motorised Duo Roller

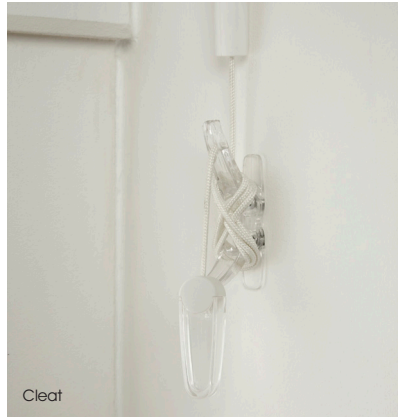
Motorisation is an inherently child safe option as it removes the need for operating chains.

## Child Safety - Duette® Shades

### Standard Cord with cord lock, breakaway tassel and cleat



Standard Cord Duette® Shades use cords to raise and lower the blind with a cord lock used to set the position of the blind. They are supplied with a Breakaway Tassel on the pull cords which also acts as a stop to prevent the cords being pulled back into the blind.



A cleat will also be supplied to be installed on the wall. To ensure this complies with child safety legislation it must be fitted no lower than 150cm from the ground.

### Tensioned Bottom Bar



Cord tensioned bottom bar is an inherently child safe option as there are no loose operating cords; instead cord tensioned feet simply attached to the bottom of the window. To raise and lower your blind simply push the bottom bar up or down and release to keep it in position.



### Motorised Duette® Shades

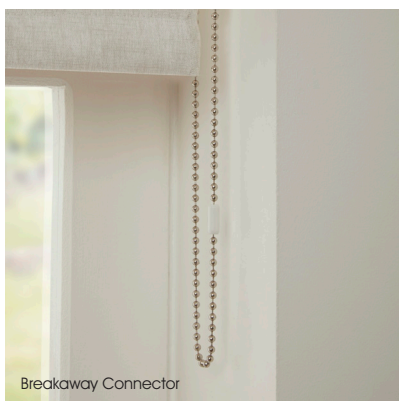
Motorisation is an inherently child safe option as it removes the need for operating cords or wands.

## Child Safety - Roller

### Chain Operated



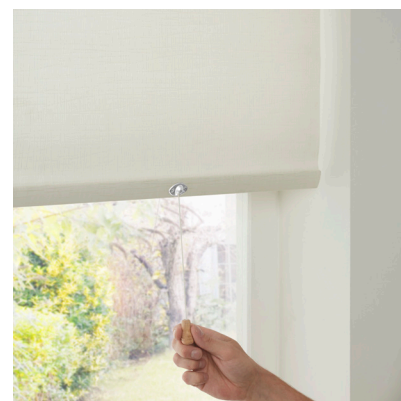
Chain operated Roller & Laminated Roller blinds can be supplied with a Chain Tension Device to be installed on the wall. To ensure this complies with child safety legislation it must be fitted no lower than 150cm from the ground.



The Breakaway Connector is an alternative option and doesn't require the use of a Chain Tension Device. This allows you to have a longer chain upto 60cm from the ground.

### Spring Operated

Louvolite Hardware Only



Spring Operated Roller blinds are inherently child safe as there are no operating chains. To operate simply use the pull cord to lower the blind to your preferred position and release the blind to lock into place. To raise the blind, pull the blind down a little and allow the blind to raise up, whilst keeping hold of the cord pull. Do not let go of the cord pull whilst the blind is rising.



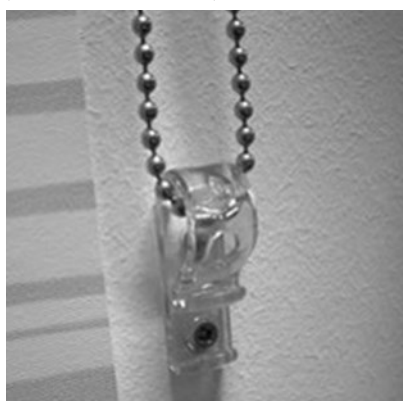
### Motorised Roller & Laminated Roller

Motorisation is an inherently child safe option as it removes the need for operating chains.

## Child Safety - Vertical & Allusion Blinds

### Dual Chain/Cord Operated

(Not available for Allusion Blinds)



Dual Chain/Cord operated Vertical blinds are supplied with a Chain/Cord Tension Device to be installed on the wall. To ensure this complies with child safety legislation it must be fitted no lower than 150cm from the ground.

### Wand Operated



Wand operated Vertical & Allusion Blinds are safe by design which means there is no need for a Chain/Cord Tension Device



## Child Safety - Perfect Fit & Intu Blinds

### Perfect Fit Aluminium Venetian



Cord Tensioner with Wand Tilter

Perfect Fit Venetian blinds with a cord tensioned bottom bar are safe by design as there are no loose cords. To operate the blind simply raise and lower using the bottom bar and tilt the slats with the wand tilter.

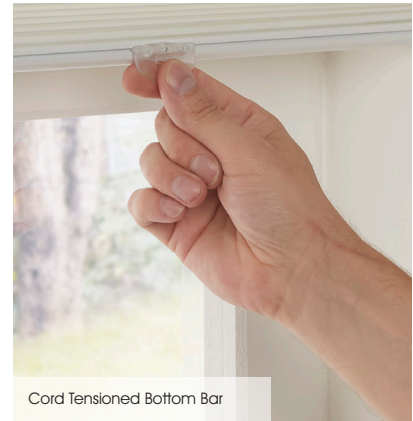
### Perfect Fit Roller



Spring Tensioned Bottom Bar

Perfect Fit Roller Blinds are safe by design as there are no operating chains. To operate the blind simply raise and lower with the bottom bar.

### Perfect Fit Duette® Shades



Cord Tensioned Bottom Bar

Perfect Fit Duette® Shades with a cord tensioned bottom bar is safe by design. To operate the blind simply raise and lower with the bottom bar.

### Intu Aluminium Venetian



Bead Fit with Cord-Tensioned Bottom Bar and top controls

Bead fit: To operate the blind simply raise and lower with the bottom bar and tilt the slats using the top mounted slider or tilt wand, optional operating rods are also available in either 30cm, 60cm & 120cm.



Wand Tilt for Side Controls

### Intu Duette® Shades

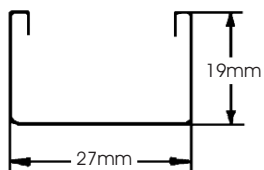


Cord Tensioned Bottom Bar

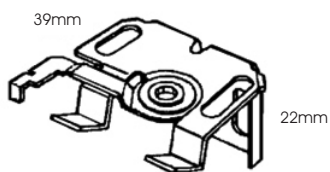
Intu Duette® Shades Blinds with a cord tensioned bottom bar are safe by design as there are no loose cords.

# Aluminium Venetian Blind Technical Guide

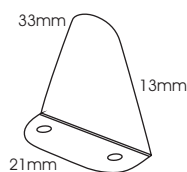
## 15mm & 25mm Aluminium Slats - cord or wand operated



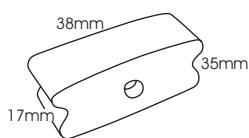
## 15mm/25mm Brackets



Swivel Bracket - Silver

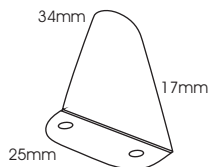
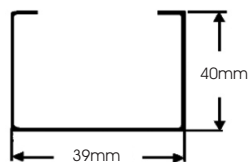


Bottom Bar Hold Down Bracket

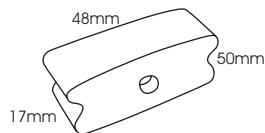


Bottom Bar Adaptor

## 35 & 50mm Aluminium Slats

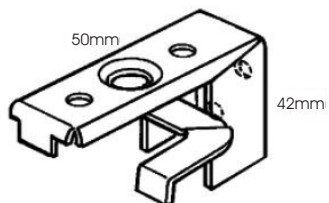


Bottom Bar Hold Down Bracket



Bottom Bar Adaptor

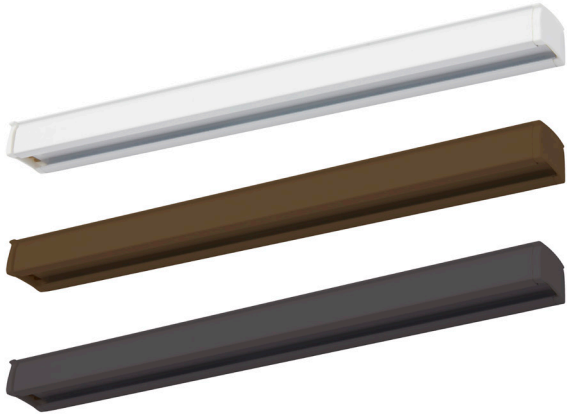
## 35mm/50mm Brackets



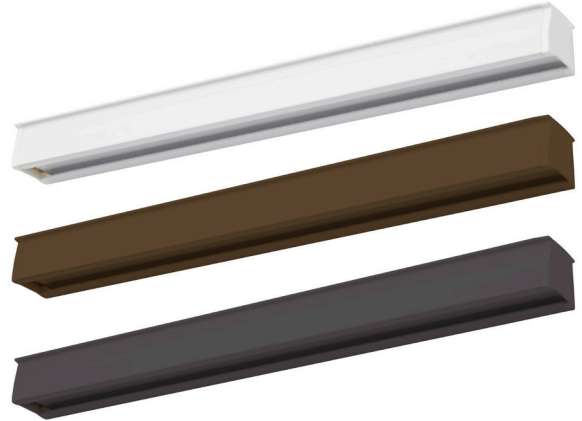
Universal Bracket - Silver

# Duette® Shades Technical Guide

## Standard Cord/Tensioned Bottom Bar



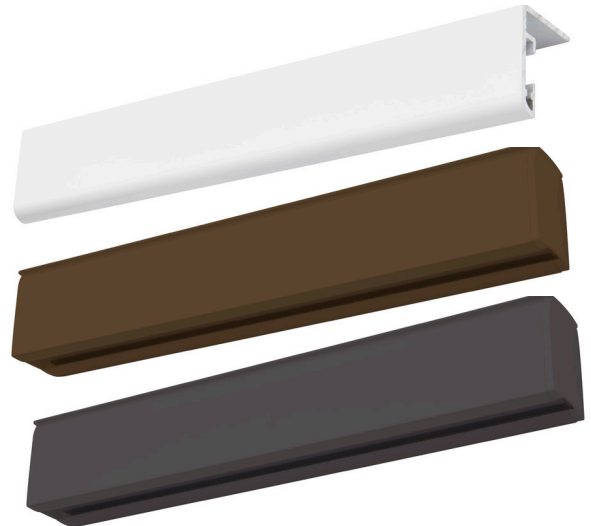
Duette Motorised Headrail (Depth 27mm, Height 34mm)



Duette Mid Rail (Depth 20mm, Height 16mm)



Duette Bottom Rail (Depth 20mm, Height 13mm)



Roof Profile Motorised (Depth 27mm, Height 33mm)



Roof Profile Mid Rail (Depth 287mm, Height 26mm)

# Duo Fabric Roller & Roller Blind Technical Guide

Louvolite 35mm Fascia Open Cassette with Standard End Caps



# Duo Fabric Roller & Roller Blind Technical Guide

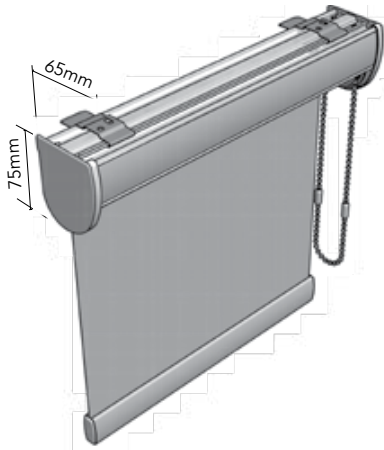
Louvolite 70mm Full Fascia Cassette with Standard End Caps



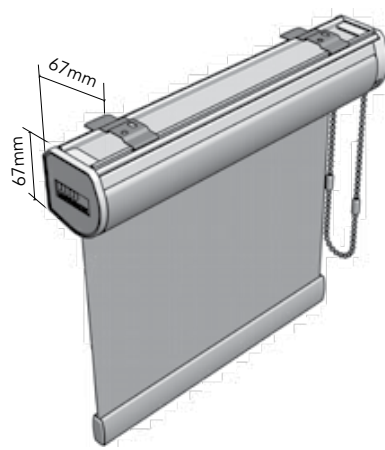


# Roller Blind Technical Guide

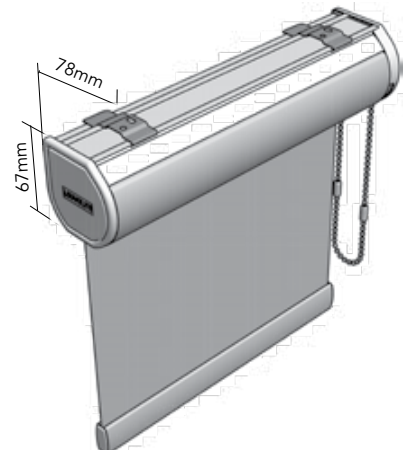
Louvolite System 32/40 Hybrid Cassette (Roller Blinds Only)



System 32® Open Cassette



System 32® Closed Cassette



System 32® & 40® Hybrid Cassette

All cassettes available in the following three colours:



White



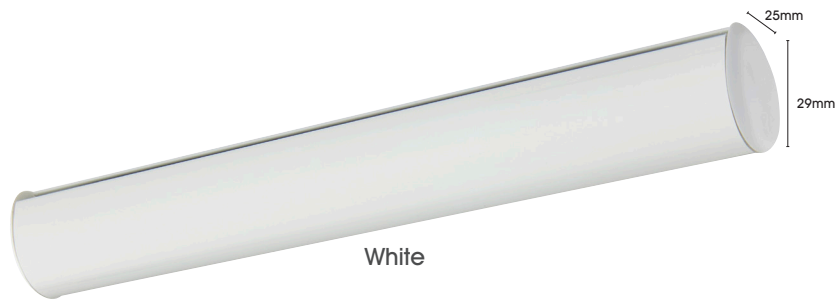
Black



Anthracite

# Duo Fabric Roller & Roller Blind Technical Guide

Louvolite Duo Roller Bottom Bars



White

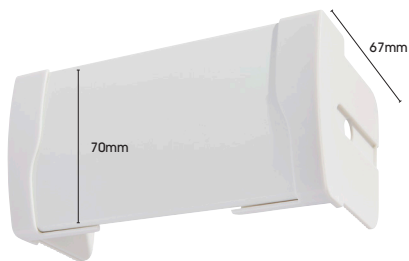


Anthracite



Black

# Senses Roller



White



Silver



Cream



Anthracite



Black

# Senses Roller Exposed Bottom Bar



White



Silver



Cream



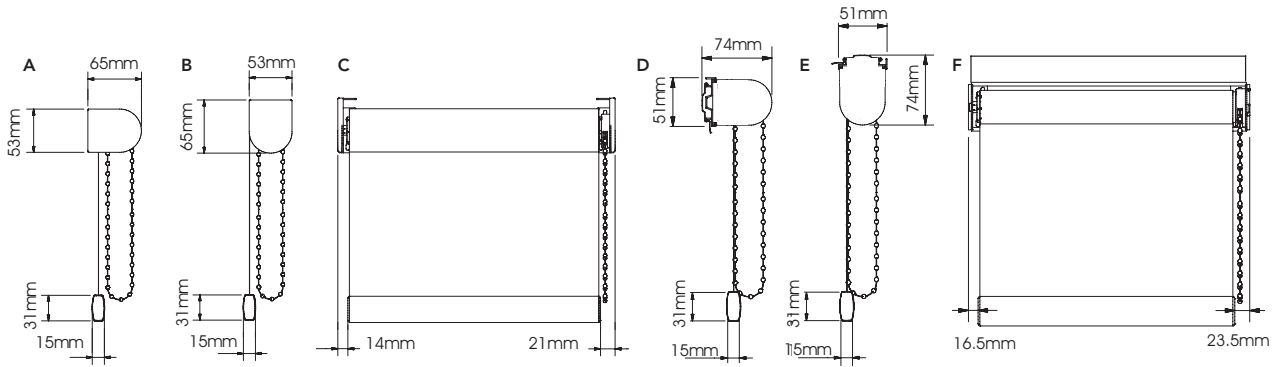
Anthracite



Black

# Roller Brackets Technical Guide

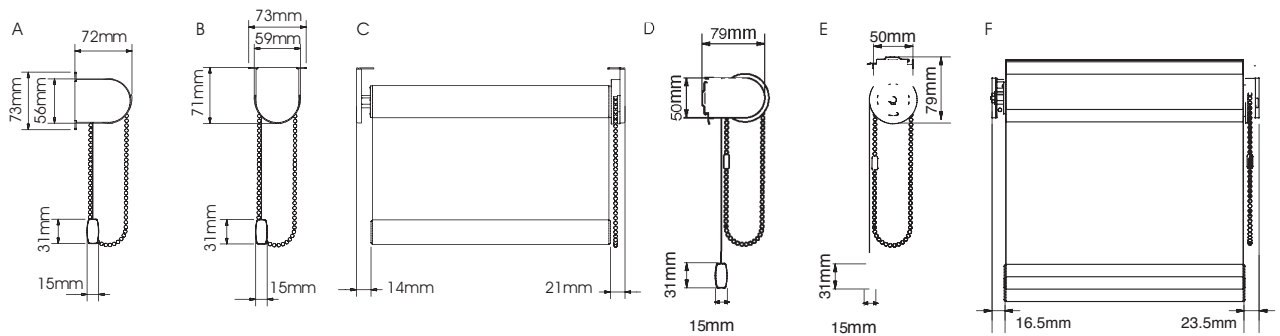
## Louvlife System 32 Dimensions



A. System 32<sup>®</sup> Standard Metal Bracket Face Fix & cover  
 B. System 32<sup>®</sup> Standard Metal Bracket Top Fix & cover  
 C. System 32<sup>®</sup> Standard Metal Bracket Top Fix Front View

D. System 32<sup>®</sup> Face Fix with Back Bar  
 E. System 32<sup>®</sup> Top Fix with Back Bar  
 F. System 32<sup>®</sup> Cassette Top Fix with Back Bar, Front View

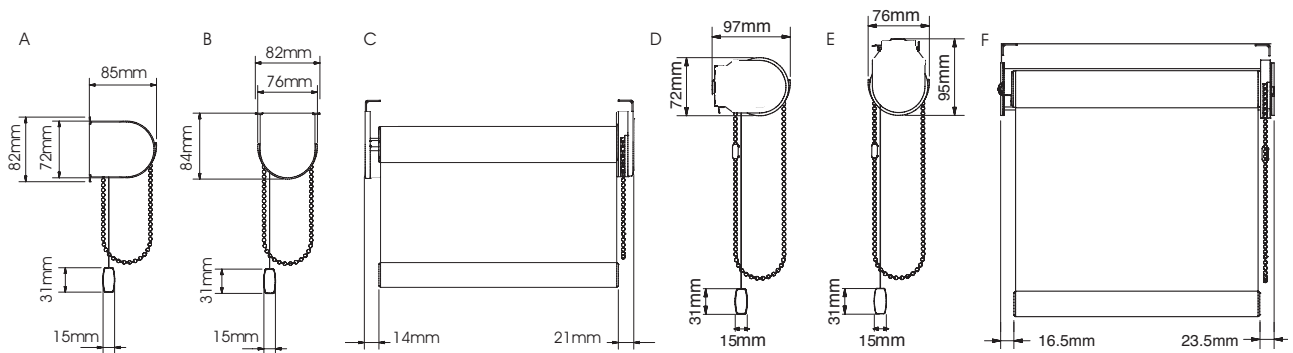
## Louvlife System 40 Dimensions



A. System 40<sup>®</sup> Standard Metal Bracket Face Fix  
 B. System 40<sup>®</sup> Standard Metal Bracket Top Fix  
 C. System 40<sup>®</sup> Standard Metal Bracket Top Fix Front View

D. System 40<sup>®</sup> Back Bar Face Fix  
 E. System 40<sup>®</sup> Back Bar Top Fix  
 F. System 40<sup>®</sup> Back Bar Top Fix Front View

## Louvlife System 45 Dimensions

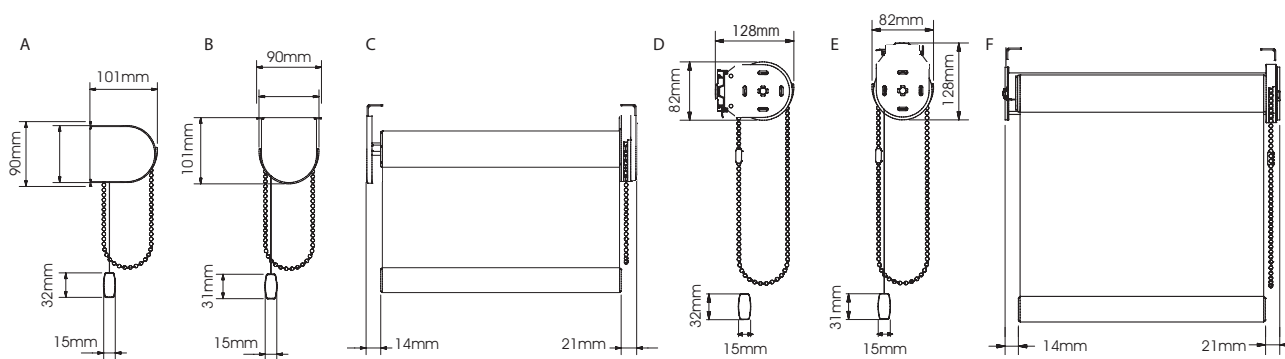


A. System 45<sup>®</sup> Standard Metal Bracket Face Fix  
 B. System 45<sup>®</sup> Standard Metal Bracket Top Fix  
 C. System 45<sup>®</sup> Standard Metal Bracket Top Fix Front View

D. System 45<sup>®</sup> Standard Metal Bracket Face Fix with Back Bar  
 E. System 45<sup>®</sup> Standard Metal Bracket Top Fix with Back Bar  
 F. System 45<sup>®</sup> Standard Metal Bracket Top Fix with Back Bar, Front View

# Roller Brackets Technical Guide

## Louvolite System 55 Dimensions



A. System 55® Standard Metal Bracket Face Fix & cover  
 B. System 55® Standard Metal Bracket Top Fix & cover  
 C. System 55® Standard Metal Bracket Top Fix Front View

D. System 55® Extension Bracket Face Fix  
 E. System 55® Extension Bracket Top Fix  
 F. System 55® Extension Bracket Top Fix Front View

# Vertical & Allusion Blind Technical Guide

## Louvolite Vertical/Allusion Blind Headrail

### Louvolite Vertical Headrail Accessories

Headrail Colour	Colour of Carriers	Colour of Cord
Anthracite	Black	Anthracite
Black	Black	Black
Brown	Brown	Beige
Gold	Black	Beige
Silver	Grey	Grey
White	White	White

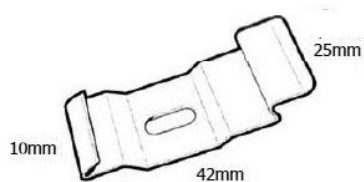
### Louvolite Allusion Headrail Accessories

Headrail Colour	Colour of Wand and Carriers
White	White wand, White carriers
Black	Black wand, Black carriers
Anthracite	Black wand, Black carriers



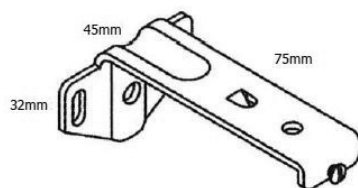
# Vertical & Allusion Blind Technical Guide

## Louvolite Vogue Vertical Blind Brackets



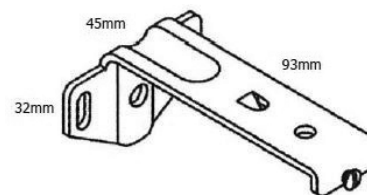
### Top Fix Bracket

SIG/V/1325-BK	Black
SIG/V/1325-BR	Brown
SIG/V/1325-SV	Silver
SIG/V/1325-WH	White
SIG/V/1325-AN	Anthracite



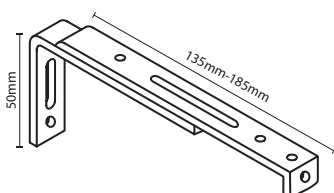
### Shallow Face Fix Bracket 89mm

SIG/V/1314-BK	Black
SIG/V/1314-BR	Brown
SIG/V/1314-SV	Silver
SIG/V/1314-WH	White
SIG/V/1314-AN	Anthracite



### Shallow Face Fix Bracket 127mm

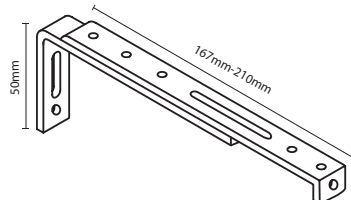
SIG/V/1310-BK	Black
SIG/V/1310-BR	Brown
SIG/V/1310-SV	Silver
SIG/V/1310-WH	White
SIG/V/1310-AN	Anthracite



### Small Extension Bracket

(Extendable from the wall to the front of the headrail from 135mm to 185mm)

SIG/V/1340	White
------------	-------



### Large Extension Bracket

(Extendable from the wall to the front of the headrail from 167mm to 210mm)

SIG/V/1350	White
------------	-------

Extendable brackets are available in all colours

### SLAT CALCULATIONS

For 89mm slats divide the headrail length (in cm) by 7.5, then round up to an even number for pair stack or to the nearest whole number for single stack.

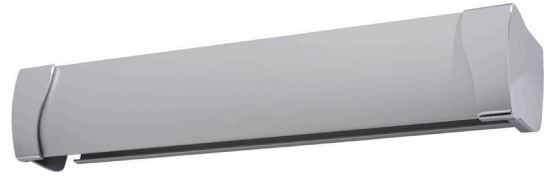
For 127mm slats divide the headrail length (in cm) by 11.5, then round up to an even number for pair stack or to the nearest whole number for single stack.

# Vertical Technical Guide

## Senses Vertical Headrails – Slim



White



Silver



Cream



Anthracite

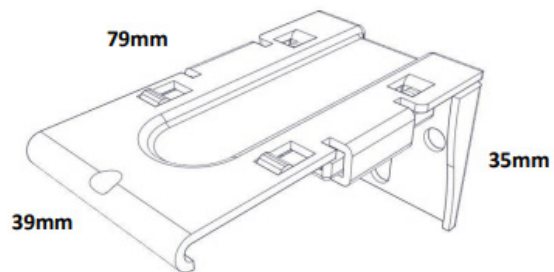
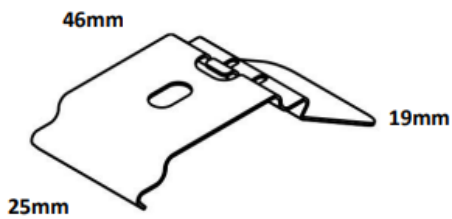


Black

### Headrail Accessories

Headrail Colour	Colour of Carriers	Colour of Cord
Anthracite	Black	Black
Black	Black	Black
Cream	White	White
Silver	White	Black
White	White	White

### Senses Slim Vertical Headrail Brackets

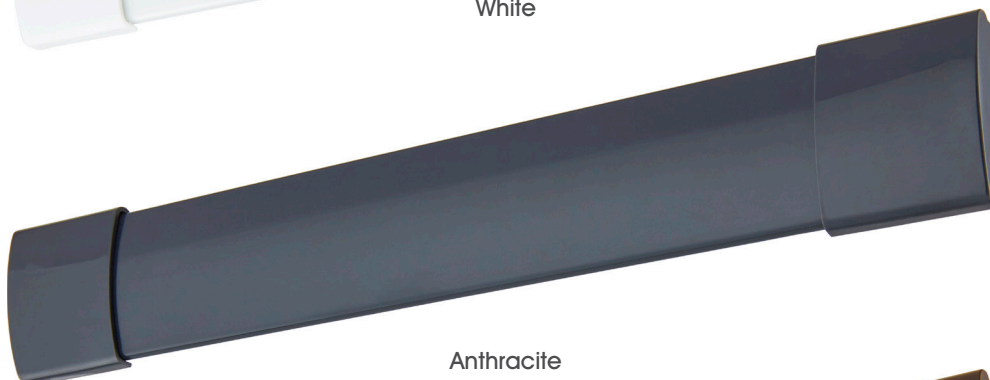


# Intu Technical Guide

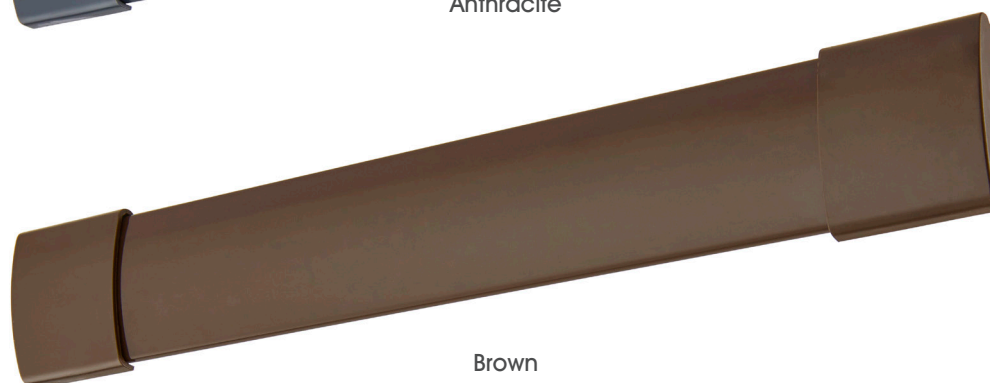
## Venetian/Duette



White



Anthracite



Brown

### Intu Fitting Tools



Intu Venetian & Duette® Shades Fitting Tool  
 Item No. INTU/INSERTOOL | £1.57 (White)  
 Intu Roller Fitting Tool  
 Item No. INTU/INSTOOLROL | £1.57 (Black)

### Intu Profile Clips

When you receive your Intu Blind the side profiles are supplied with clips to keep them held firmly in position and retain the tension in your blind.

The number of clips supplied is determined by the drop of your blind. See details below for the number of clips provided.

Blinds with a drop up to 50cm are supplied with 2 clips (1 each side)

Blinds with a drop up to 100cm are supplied with 4 clips (2 each side)

Blinds with a drop up to 150cm are supplied with 6 clips (3 each side)

Blinds with a drop over 150cm are supplied with 8 clips (4 each side)



# Perfect Fit Technical Guide

## Frame for Venetian, Duette & Roller Blinds



## Roller Blind Headrail



### Perfect Fit Handle Spacers

This handle spacer can be used to extend your window handle by 2mm or 6mm. When you fit your perfect fit blinds the handle may encroach on the frame and therefore need extending.



### Perfect Fit Handle Recess

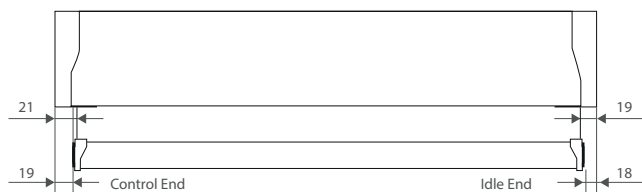
If your handle is less than 22mm from the glass an handle recess can be used to ensure the handle fully opens and close. Additional frame modifications can be made if a diagram is supplied.



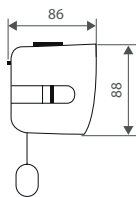
# Senses Chain-Op Measurement Technical Guide

## General Bracket, Mount Profile & Fascia Dimensions

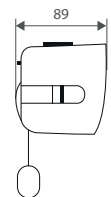
### Senses Universal Fascia



#### Top Fix

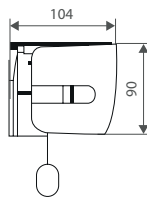


32mm unit



40mm unit /  
Large bracket

#### Face Fix

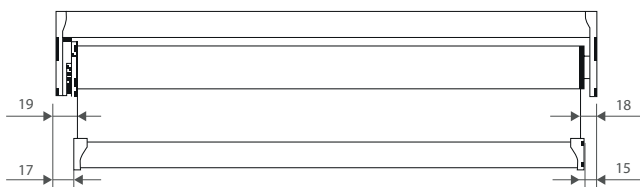


Endplate

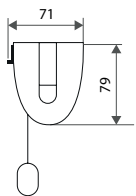
### Deductions

1 cm deduction for recess size  
Fabric is 4cm narrower than cassette

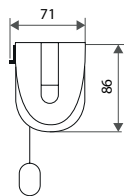
### Senses Mounting Profile



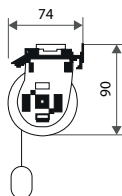
#### Top Fix



32mm unit



40mm unit

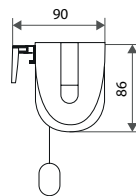


40mm unit /  
Large bracket

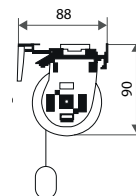
### Deductions

1 cm deduction for recess size  
Fabric is 3.7cm narrower than profile

#### Face Fix

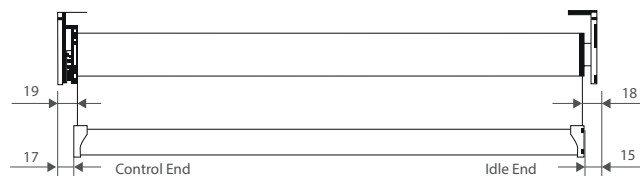


40mm unit

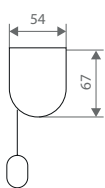


40mm unit /  
Large bracket

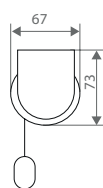
### Senses Standard Fit



#### Medium

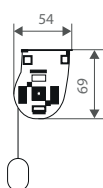


32mm unit

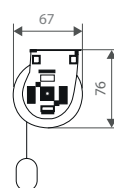


40mm unit

#### Large



32mm unit



40mm unit

### Deductions

No deduction for recess size  
Fabric is 3.7cm narrower than size specified



**HALLIS HUDSON**  
*Committed to excellence*

Online: [www.hallishudson.com](http://www.hallishudson.com) | Email: [sales@hallishudson.com](mailto:sales@hallishudson.com)