



Made to Measure Window Blinds

Intu® Roller Blinds

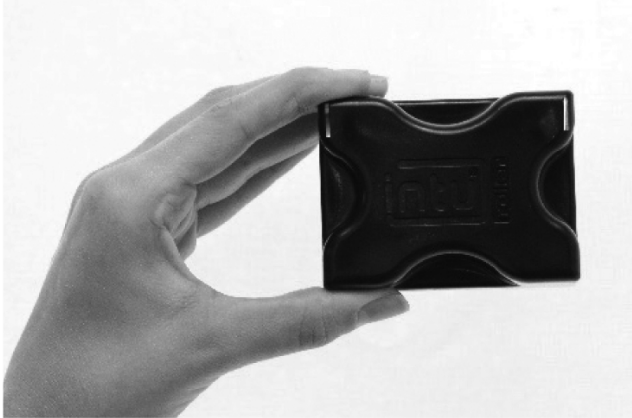
Fitting Instructions

This roller blind was custom built to your exact requirements. High Quality materials and a design that is perfect in function and elegance guarantee a lifetime of long service.

Please read the following instructions carefully before installing your blinds

Intu® Roller Blinds

Fitting Instructions



1. To fit your INTU® Roller Blind you will require the special bracket fitting tool. (INTU/INSERTTOOL)



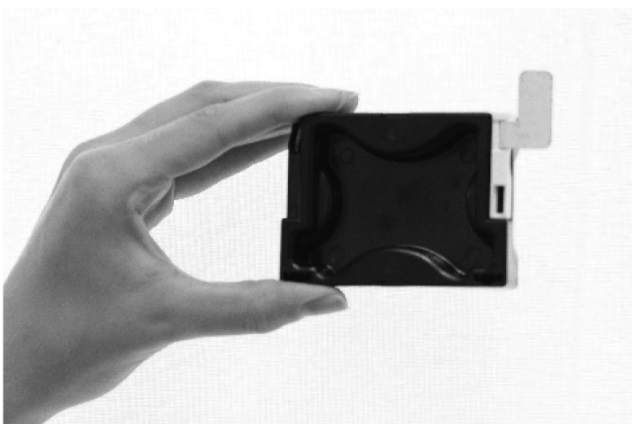
4. Insert the bracket behind the rubber seal until the tool edge touches the bead at both top & side. Repeat for other side.



2. Fully unpack the blind and lay out all parts supplied.



5. Similarly locate one of the bottom brackets in the tool.



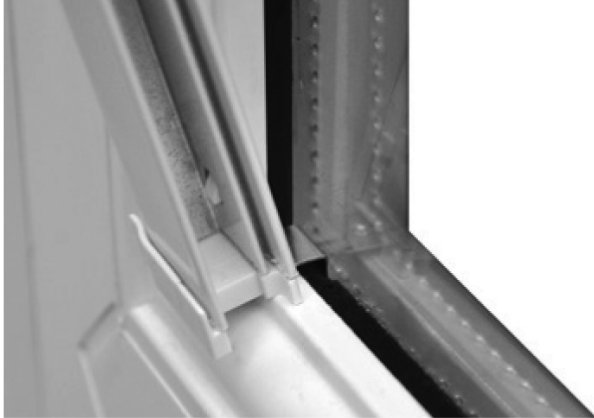
3. The brackets are fitted behind the window bead, all are handed. Locate one of the top brackets into the tool aperture and push.



6. Insert the bracket behind the rubber seal until the tool edge touches the bead at both bottom & side. Repeat for other side.

Intu® Roller Blinds

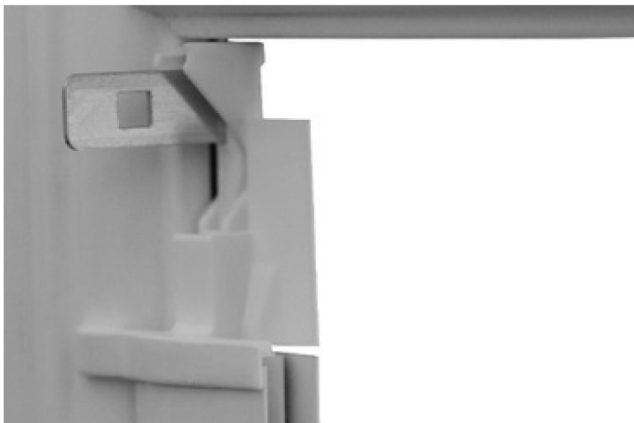
Fitting Instructions



7. Locate the profile bottom end cap over the bottom bracket.



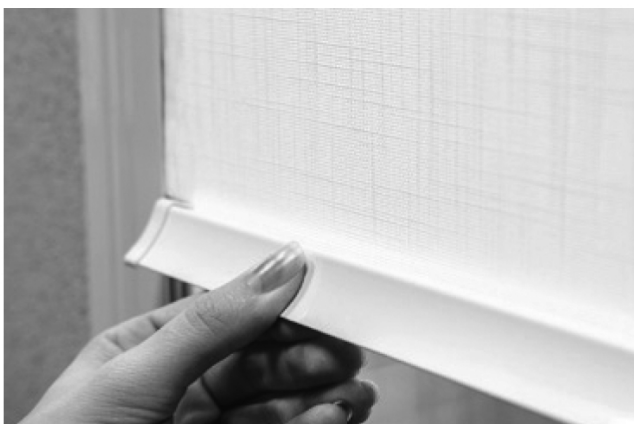
10. Slide the headrail onto top corner brackets on both sides. *N.B Do not push blind fully home onto brackets*



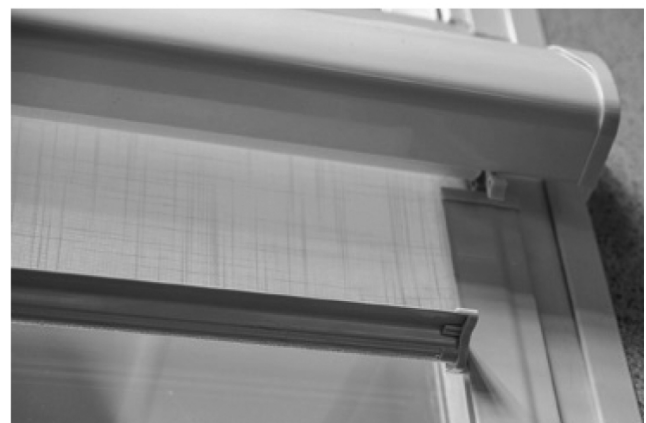
8. Apply pressure to click home the profile top end cap.



11. On opposite side, tilt bottombar to open position and slide side extrusion over bottombar end cap and fabric ensuring both are within the fabric channel on the side extrusion.



9. Insert one side of fabric and corresponding bottombar end cap into side extrusion.



Intu[®] Roller Blinds

Fitting Instructions



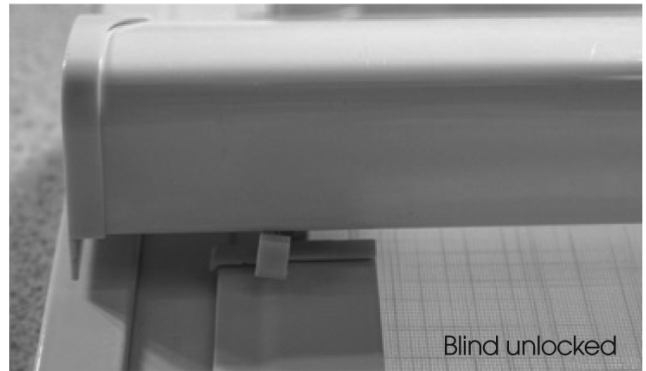
12. When the side extrusion is pushed all the way up and is in position, lock the bottom bar in place.



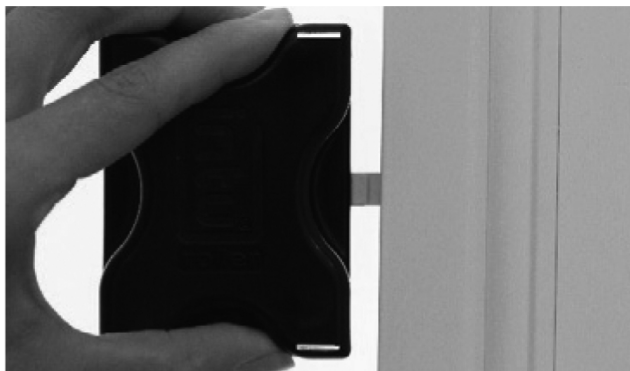
15. The blind can now be pushed fully home onto brackets.



13. Engage the side extrusion bottom bracket into the bottom corner fixing bracket.



16. Ensure Locking arm is in the correct position after installation.



14. Position relevant number of recommended side extrusion clips according to the drop of the blind. Push home the extrusion clips with fitting tool.

