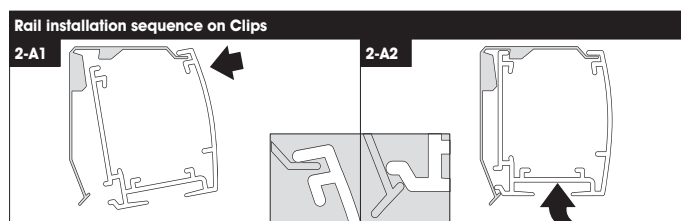
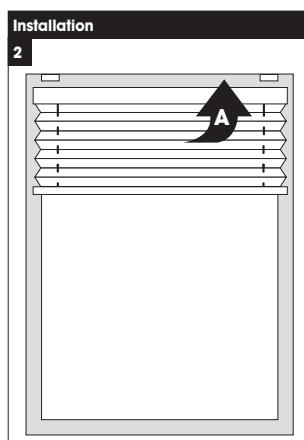
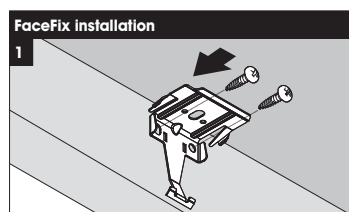
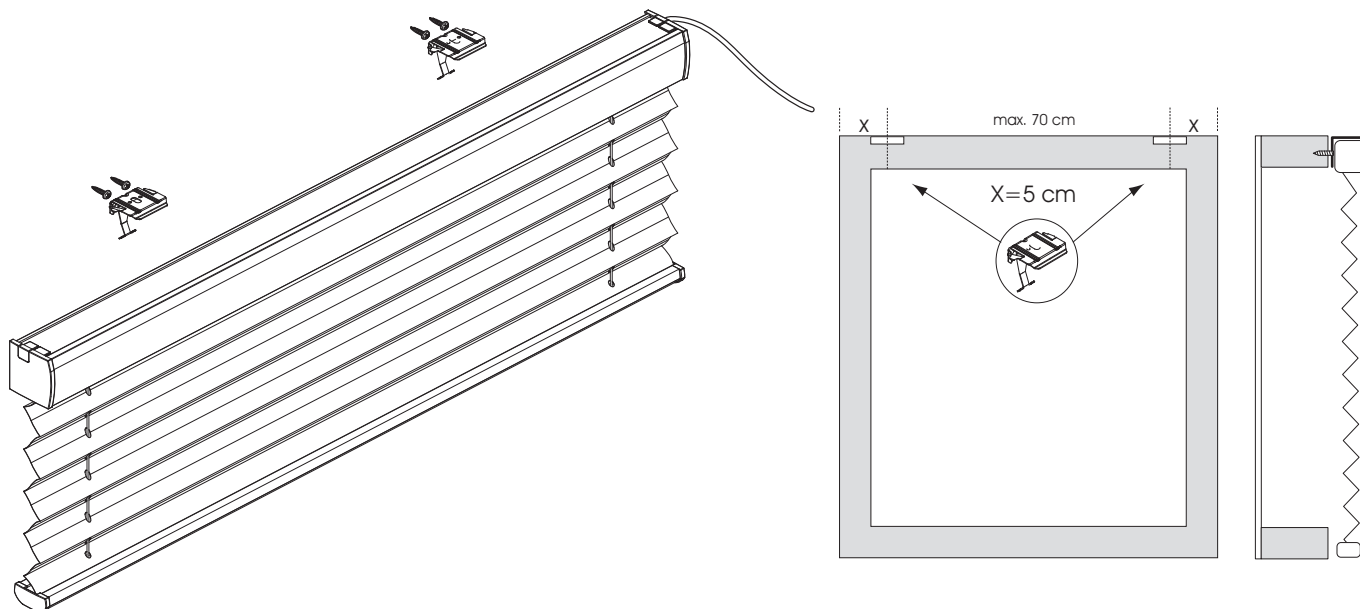


FaceFix installation To a Window Frame / Wall

**Model
AE10**

- ! Do not damage the product when using a sharp knife to open the packaging! Fitting screws: Use a size-2 screwdriver (POZIDRIVE) or use an electric screwdriver at it's lowest torque .
- Rail removal: Use a flat screwdriver of max. 6 mm wide. Only use the original screws enclosed, to prevent malfunctioning from using too thick screw heads!

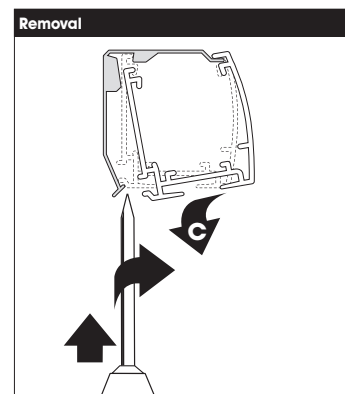


Connection

3

! The built-in motor (24 V DC) with automatic end position adjustment may only be connected to the 230V mains using a stabilized 24 Volt DC Power Supply. **Only use Power Supplies and controls recommended by the manufacturer of the Pleated Blind, to prevent damage or malfunctioning caused by non-compatible electric components!**

● When connecting electric components, the wiring diagram provided by the manufacturer of the Power Supply must be observed.



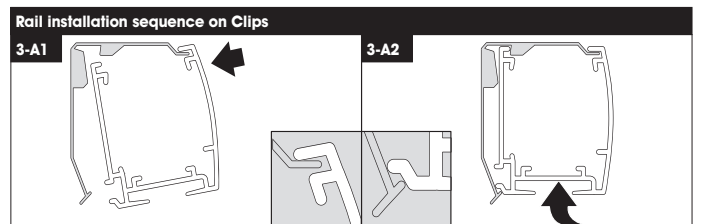
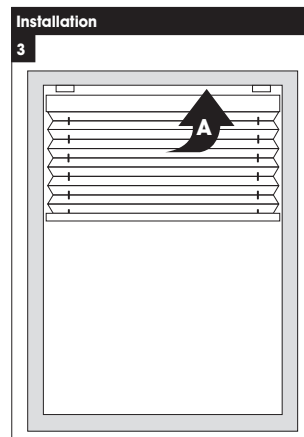
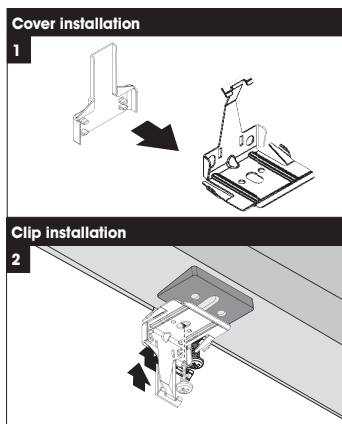
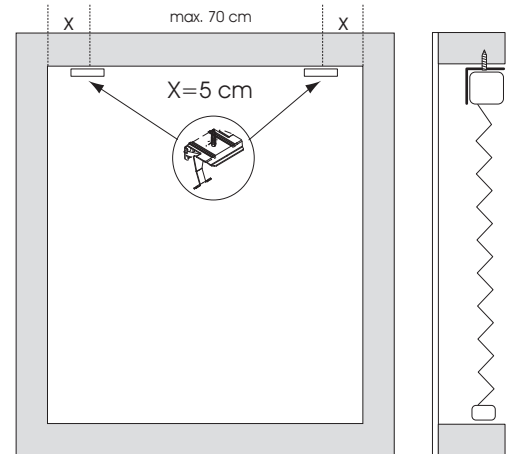
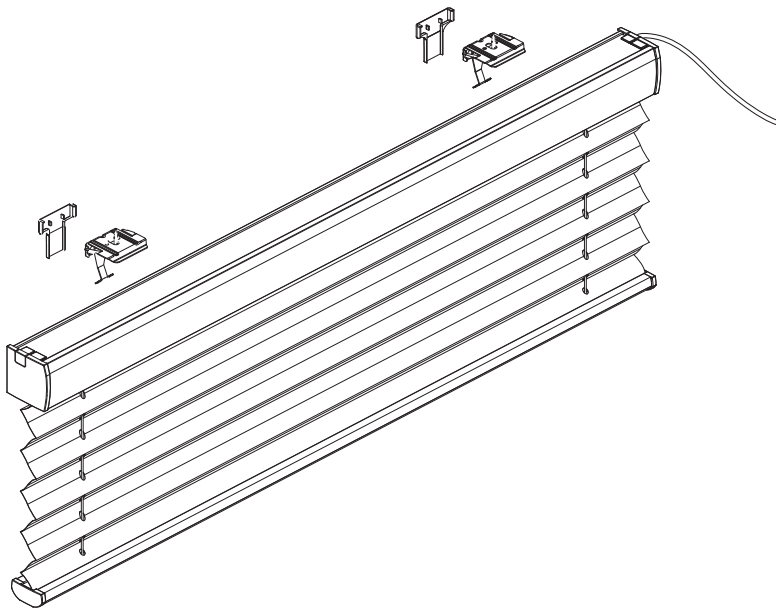
18-04-2014

Subject to technical changes

Installation TopFix / RecessFix [R1]

**Model
AE10**

! Do not damage the product when using a sharp knife to open the packaging!
• Fitting screws: Use a size-2 screwdriver (POZIDRIVE) or use an electric screwdriver at it's lowest torque. Rail removal: Use a use the original screws enclosed, to prevent malfunctioning from using too thick screw heads!

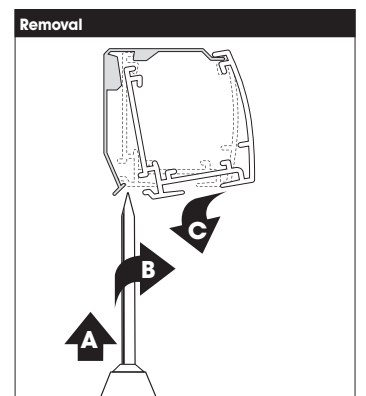


Connection

4

! The built-in motor (24 V DC) with automatic end position adjustment may only be connected to the 230V mains using a stabilized 24 Volt DC Power Supply. **Only use Power Supplies and controls recommended by the manufacturer of the Pleated Blind, to prevent damage or malfunctioning caused by non-compatible electric components!**

• When connecting electric components, the wiring diagram provided by the manufacturer of the Power Supply must be observed.



Subject to technical changes

18-04-2014