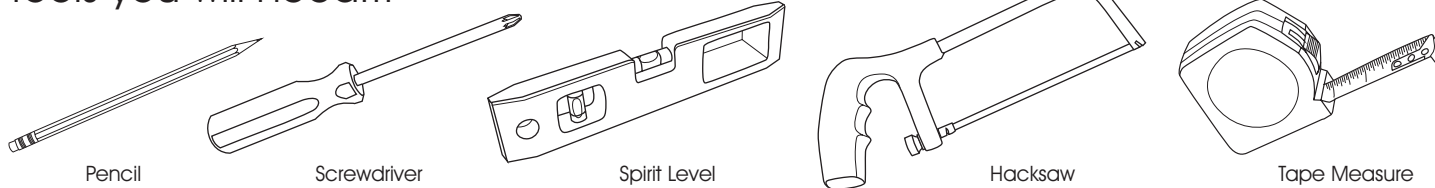


Professional Roman Blind System

Kit and Profile Instructions



Tools you will need...



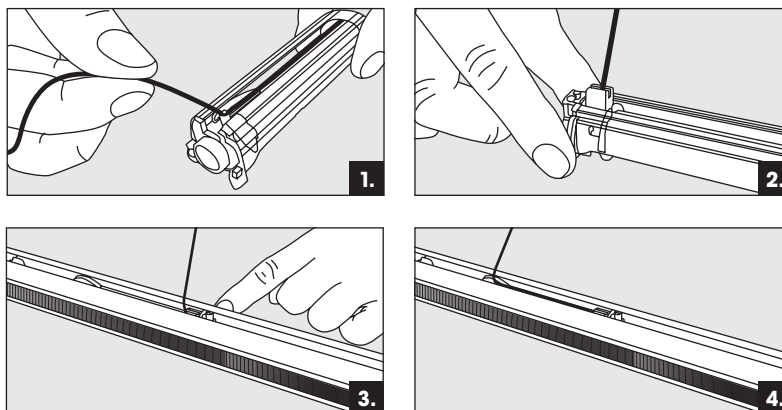
how to... adjust your spools...

Step 1. Remove the cord from the cord guide.

Step 2. Pull the grey button up making sure the spool is completely free of cord.

Step 3. Re-position your spool and push each grey button down to lock them into place.

Step 4. Ensure the cord is attached to the cord guide at the opposite end of each spool.



IMPORTANT: please check all grey buttons have been pushed down and the cord is attached to the cord guide before operating your blind.

how to... change your gear housing side...

Step 1. Remove the cord from the cord guide.

Step 2. Pull the grey button up making sure the spool is completely free of cord.

Step 3. Remove the quick release end cap and chain from your gear housing.

Step 4. Unscrew the screw to release the gear housing from the headrail cord.

Step 5. Pull the gear housing out from the headrail enough for you to access the screw which connects the axle rod to the gear housing.

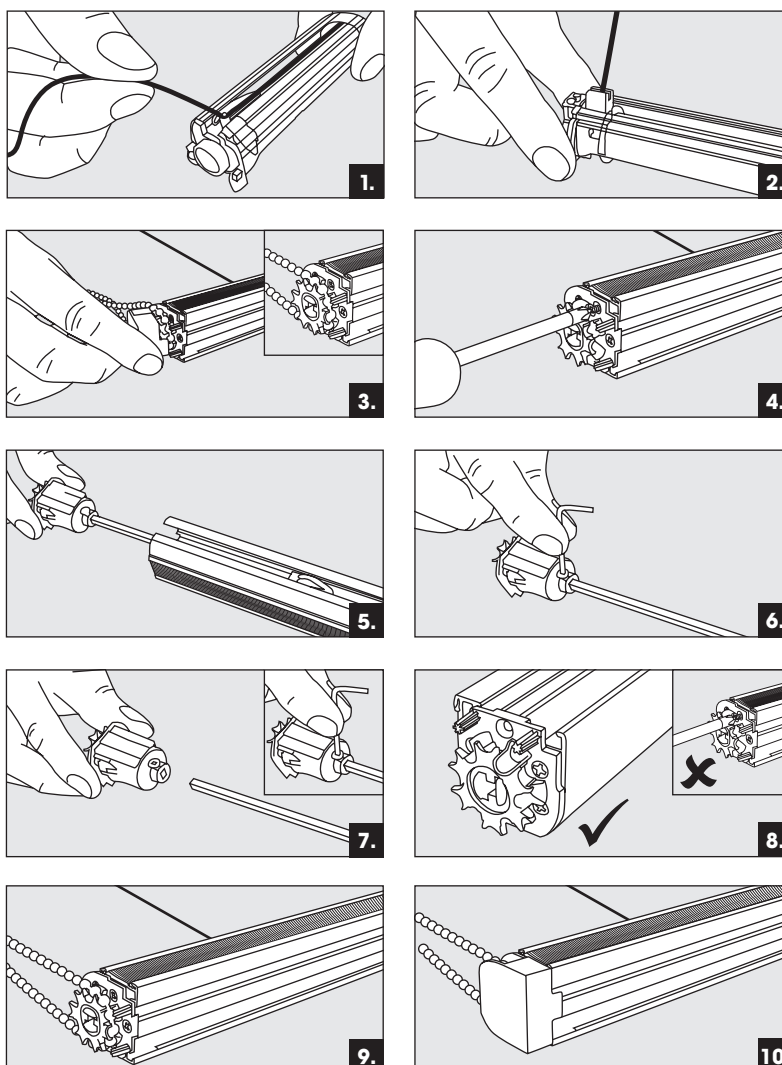
Step 6. Take the allen key provide with the blind and unscrew until loose enough to be able to remove the gear housing from the axle rod.

Step 7. Attach the gear housing to the axle rod at the opposite end of your blind and ensure the axle rod is fully inside the gear housing and re-tighten with the allen key to secure to the axle rod.

Step 8. To secure the gear housing to the headrail rotate it until there is a clear gap to insert the screw into the headrail then **tighten by hand**. Check to make sure the gear housing rotates by turning the wheel, it should spin around freely.

Step 9. Attach your chain to the gear housing.

Step 10. Connect the quick release end cap.



how to... shorten the headrail...

Step 1. Move the spool along the profile until you have sufficient space to measure and cut to the desired width.

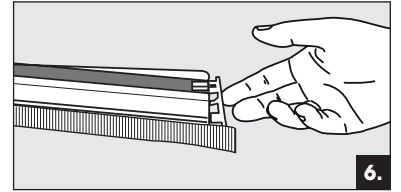
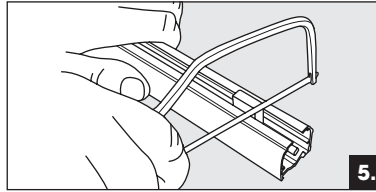
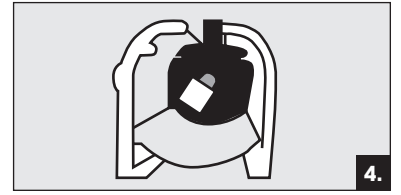
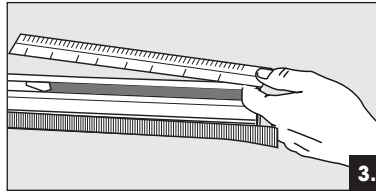
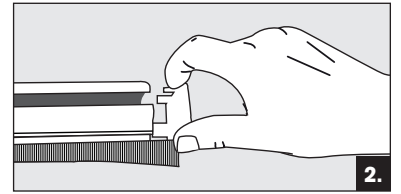
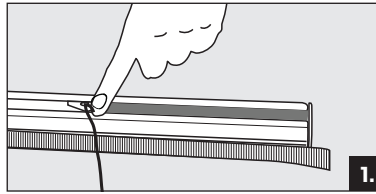
Step 2. Remove the end cap from the opposite end to the gear housing, this is the end of the profile you will be cutting.

Step 3. Measure and mark off the required width of the blind.

Step 4. Position the cutting jig to the required length by sliding the cutting jig inside the profile.

Step 5. Cut down the profile and axle rod with a hacksaw.

Step 6. Remove the cutting jig from the profile and replace the end cap.



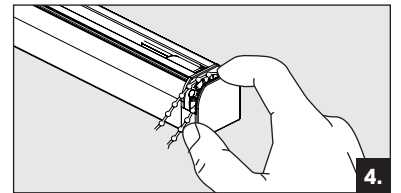
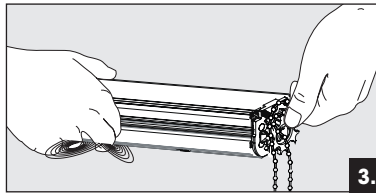
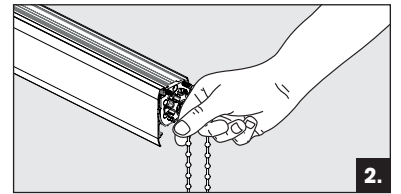
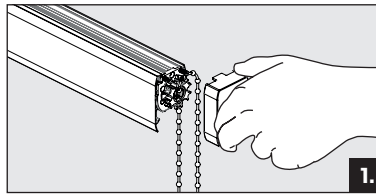
how to... remove and replace the chain...

Step 1. Remove the quick release end cap from the gear housing.

Step 2. Remove the current chain and replace with your chosen chain (size No. 10).

Step 3. Ensure the chain sits neatly within the housing.

Step 4. Re-fit the quick release gear housing cover ensuring it's firmly attached.



how to... install...

Step 1. The brackets should be positioned approximately 50mm in from the end of the headrail and evenly spread across the width of the blind.

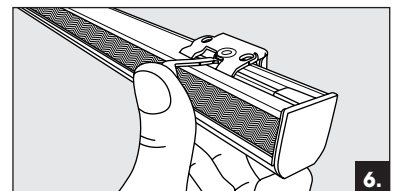
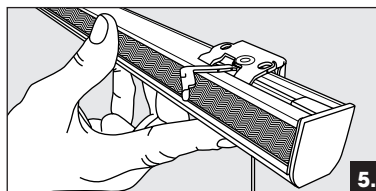
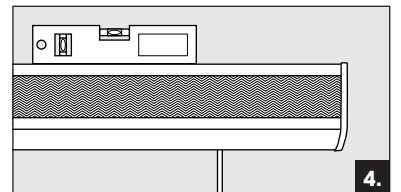
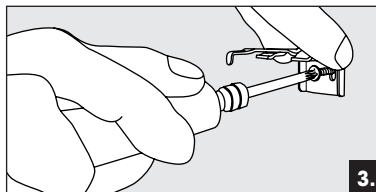
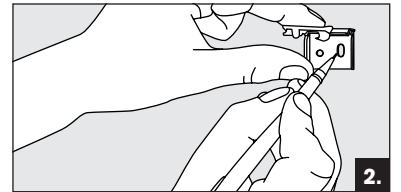
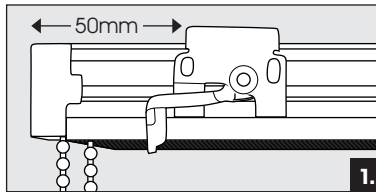
Step 2. Place the brackets in the desired position and mark the surface you are attaching to through the screw holes.

Step 3. Fix the brackets in place with the appropriate fixings for the type of surface.

Step 4. Use a spirit level to check and adjust the position of the brackets before fully tightening the screws.

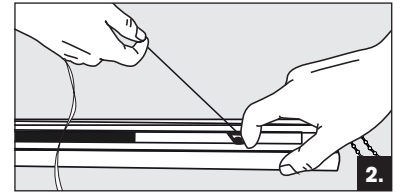
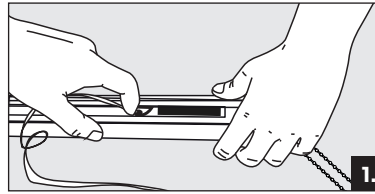
Step 5. Hold the headrail up to the brackets, tilt forward and insert onto the brackets then tilt back until level.

Step 6. Once firmly in position press the lever until the headrail is locked in place.



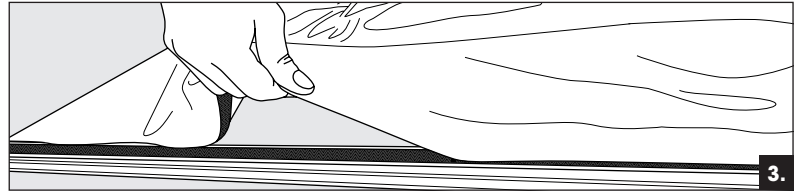
how to... attach the blind...

Step 1. Slide the spools into the desired position.



Step 2. Fully unwind all the cord from the spools.

Step 3. Attach the blind using hook and loop tape and press firmly into position.



Child safety requirements...

Specific warning for non-integral devices

Children can strangle if this safety device is not installed. Always use this device to keep cords or chains out of reach of children.

Safety device fitting instructions...

Note The fixed retaining safety device must be installed at the maximum distance possible from the control mechanism to ensure that the chain remains taut.

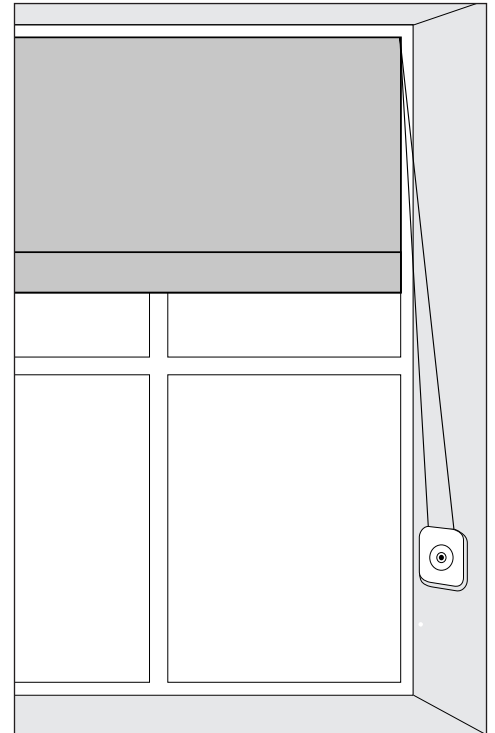
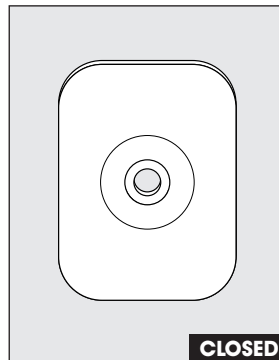
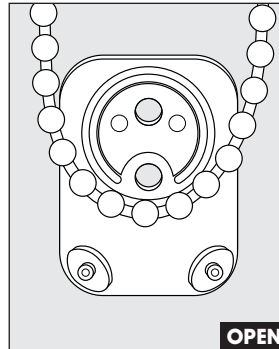
WARNING! The distance from the floor to the bottom of the chain must be AT LEAST 150cm. Children can strangle if this safety device is not installed.

Step 1. The safety device supplied is in two halves. Remove the cover and screw the safety device to the wall using appropriate fixings for the surface you are fitting to.

Step 2. Ensuring that the chain remains taut, place the chain into the safety device.

Step 3. Having checked that the bottom of the chain is at least 150cm from the floor, replace the safety device cover.

Step 4. Warning labels must be left on the chain for the notice of the end user.



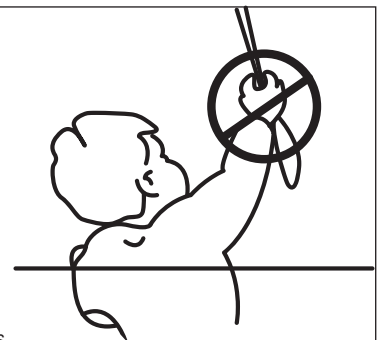
WARNING!

Young children can be strangled by loops in pull cords, chains, tapes and inner cords that operate the product.

To avoid strangulation and entanglement, keep cords out of the reach of young children.

Cords may become wrapped around a child's neck. Move beds, cots and furniture away from window covering cords.

Do not tie cords together. Make sure cords do not twist and create loops.



HALLIS HUDSON
Committed to excellence

Motorised Roman Blind

Complete Programming

how to...

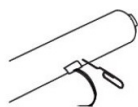
Reset & Program your motor



See our instructional video here on how to program your motor.

1. Putting your blind into programming mode...

Only connect the motor that should be programmed to power. When programming a multi channel control, choose channel first.



Press and hold button on the motor. Motor jogs 3 times... first after 2 sec, after 7 sec and after 12 sec. → OK



When using a multi channel handset please ensure you select the appropriate channel before continuing to program your blind. This step is not applicable to single channel remotes.



Press the circle button until the light indicator is lit for your chosen channel



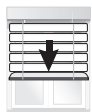
Press and hold UP and DOWN until the motor jogs



2. Check the motor direction...



if OK, skip to step 4



or



if **NOT** OK, follow step 3



3. If you need to change the motor direction...



Press and hold MY until the motor jogs



4. Place the blind in the desired UP position...



Press and hold UP until the blind is at the desired top position



5. Set the DOWN position...



Press then release MY and DOWN together



Blind goes down, must press stop before the blinds reaches the bottom

Stop near desired down position

Adjust to desired down position

6. Set the UP position...



Press then release MY and UP together



The motor moves upwards and stops at the UP position

7. Confirm end limit setting...



Press and hold MY until the motor jogs



8. Record an RTS transmitter...



Press and release the programming button on the back of the remote... motor jogs to confirm limits are locked and setup is complete



how to...

test if your blind is in roman mode

Raise your blind to the top, press and hold the down button.

If your blind doesn't reach the bottom then follow instructions below to set the blind into roman mode.

1.



Place the blind half way down

2.



5 sec.



Press and hold UP and DOWN
until the motor jogs

3.



2 sec.



Press and hold MY and DOWN
until the motor jogs

Test that the blind is now working
as expected



— HALLIS HUDSON —
Committed to excellence