



HALLIS HUDSON  
**PROFESSIONAL**  
 roman blind system

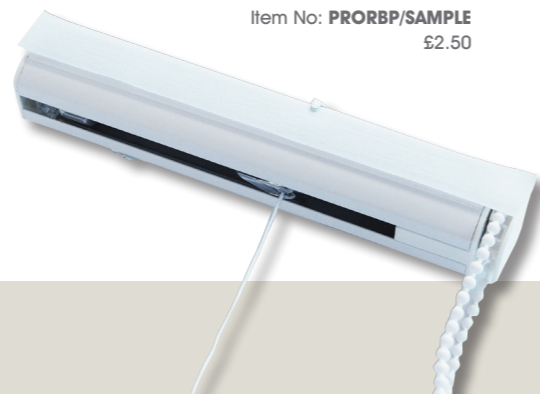


A Professional Roman Blind System at a value for money price that has stood the test of time.

To give you flexibility and ease of use the system is available in standard size kits & profiles, cut down or made to measure to your requirements and also in component parts.

Upgrade your Professional Blind with Somfy motorisation for the ultimate in control, convenience and ease of installation with no wiring & no disruption to decoration.

Item No: **PRORB/SAMPLE**  
 £2.50



HALLIS HUDSON

how to...

## make a Professional Roman Blind System

with Marc Brown



Marc Brown is our Product Manager for Blinds, with over six years at Hallis and a passion for creating the best blinds and blind systems available in the market he's our blind guru.

HALLIS HUDSON  
**PROFESSIONAL**  
 roman blind system

"I've created this step by step guide to assembling your Professional Roman Blind to help you create your own customised blind. At the same time this is a great resource to get to know the component parts of the blind profiles and kits available also. From its superior quality headrail to the quick release end caps and easy adjustable spools assembling your Professional Roman Blind is fast, simple and a pleasure to build."

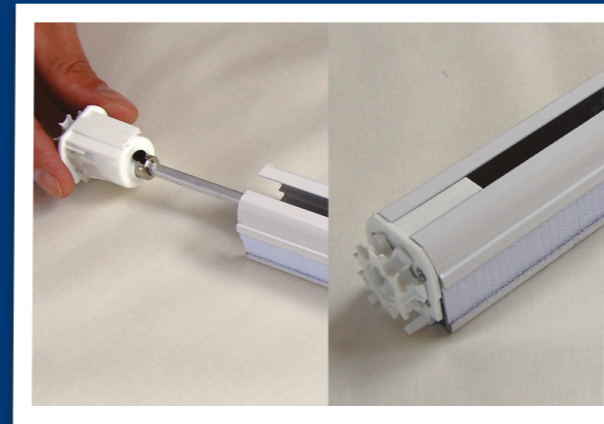
### Tools you will need...

- ✓ Tape Measure
- ✓ Hacksaw
- ✓ Screwdriver (Phillips)
- ✓ If using metal chain, Chain Joining Pliers (Item no. BL1103)
- ✓ Pencil
- ✓ Allen Key 2mm

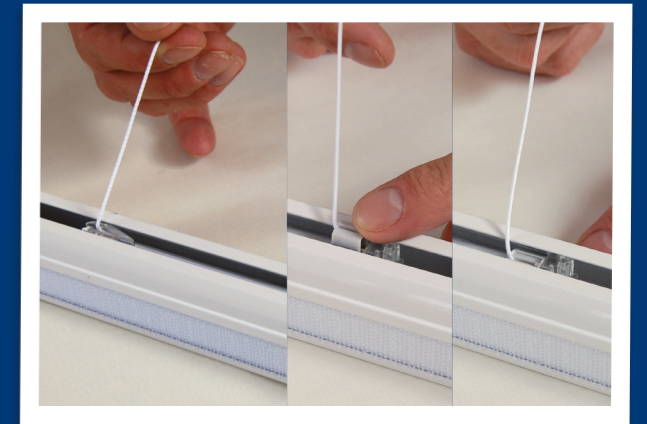


# how to

## Assemble your Professional Roman Blind from Components



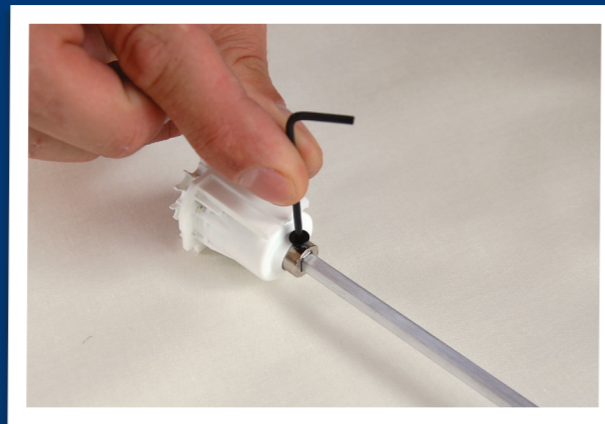
5. Check to make sure the grey button on each spool is fully pulled out, then take your axle rod with gear housing connected and insert through each of the spools until it is completely inside the headrail.



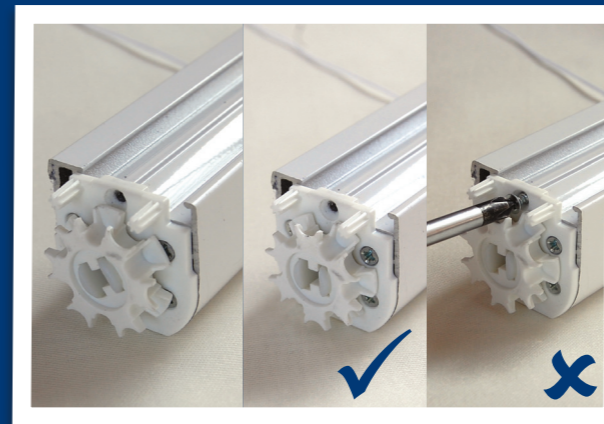
6. Ensure the cord is attached to the cord guide at the opposite end of each spool. Now position the spools equally apart and push each grey button down to lock them into place.



1. Measure and mark off the headrail deducting 15mm from your finished blind size, this is to take into account the length of gear housing. Cut the headrail to your required width and file to make sure there are no sharp edges, then cut your axle rod 35mm less than the headrail.

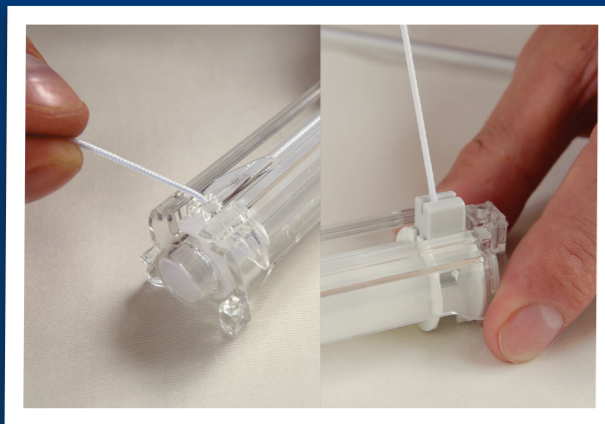


2. Connect to your gear housing tightening the grub screw with a 2mm allen key.

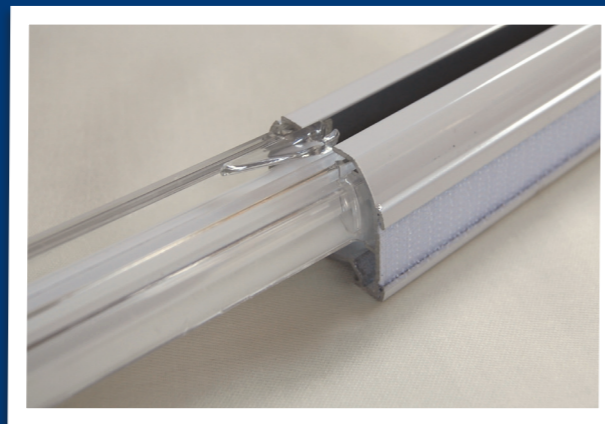


7. To secure the gear housing to the headrail rotate it until there is a clear gap to insert the screw into the headrail then tighten with your philips screwdriver. Check to make sure the gear housing rotates by turning the wheel, it should spin around freely.

If you are using a standard white plastic chain use the appropriate set size loop as these cannot be re-joined skip to STEP 13 otherwise continue the guide which shows you how to cut and re-join your choice of metal chain to your chosen size.



3. Take your first pre-loaded spool remove the cord from the guide and pull the grey button up making sure the spool is completely free of cord.



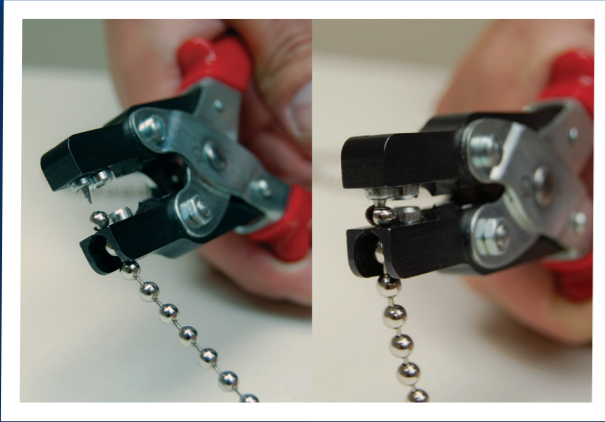
4. Insert one spool inside the headrail ensuring the cord guide always faces towards the outside. Repeat these steps for the remaining spools ensuring the last spool also faces towards the outside of the headrail.



8. Using the chain joining pliers (BL1103) split your existing chain.



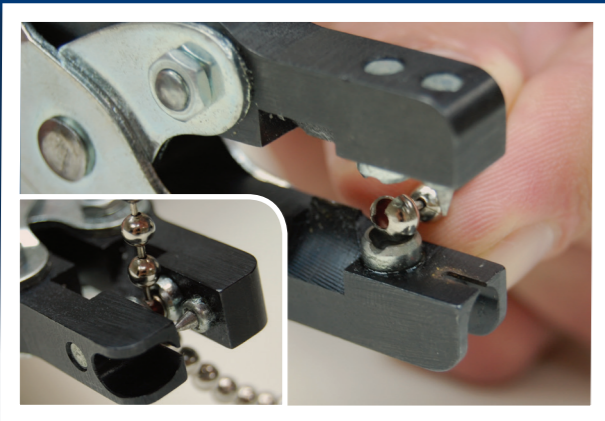
9. Measure your chain to the correct size and cut off any excess chain.



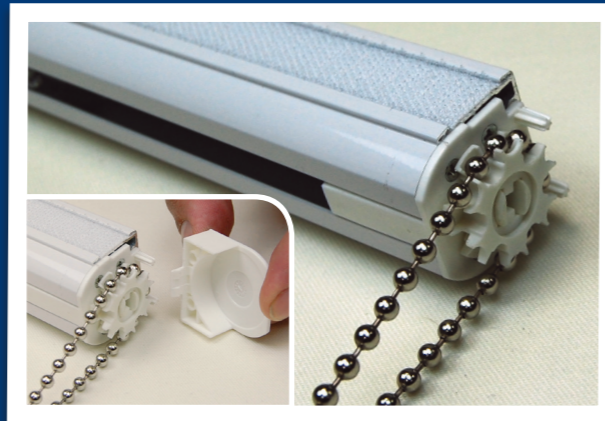
**10.** Place one of the ball's in the cut out on the lower jay of the pliers and firmly press down until the ball splits open halfway.



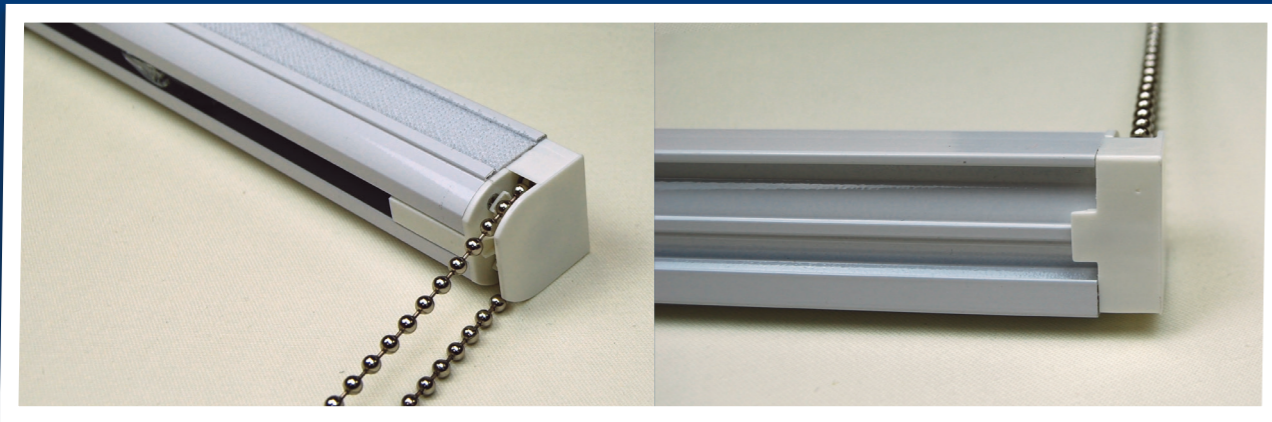
**11.** Remove the chain from the pliers and place the opposite end in and firmly press down until this splits completely in half and falls away from the chain.



**12.** Place the end of the chain with the ball that is split halfway open and carefully insert the pin from the opposite end of the chain ensuring it sits neatly inside the half open ball. Firmly press the pliers to close the ball and re-join the chain.



**13.** Connect your chain to the gear ensuring the chain sits correctly on the wheel and align the two tabs at the top of the gear housing with the ones on the end cap.



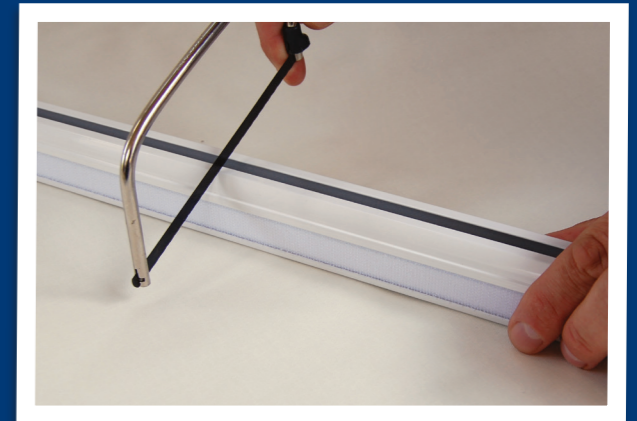
**14.** Push the end cap onto the gear housing until it clicks firmly in place, if you need to remove simply pull the tab up to release it from the gear housing.

# how to.

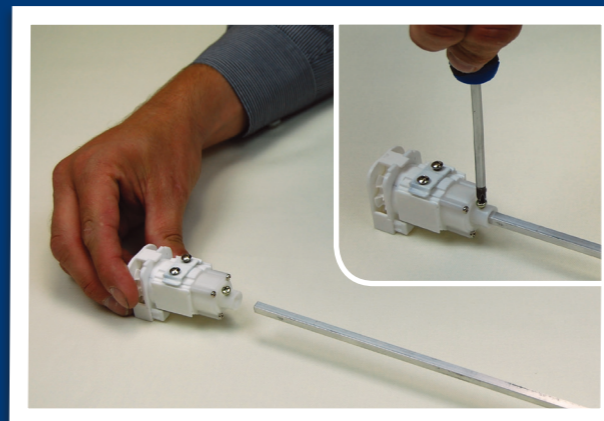
## Assemble your **Chain Operated** Elite Roman Blind from Components



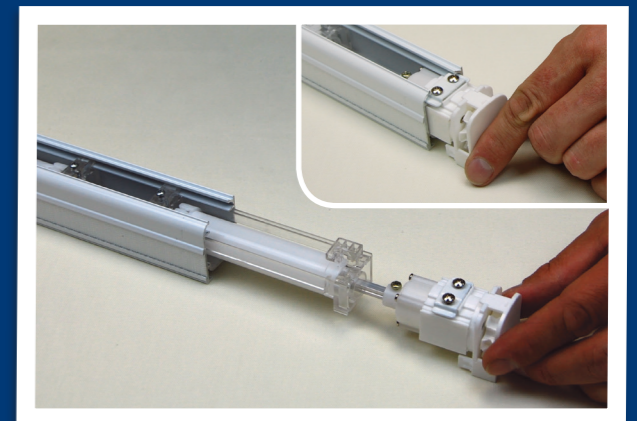
**1.** Measure and mark off the headrail deducting 15mm from your finished blind size, this is to take into account the length of gear housing.



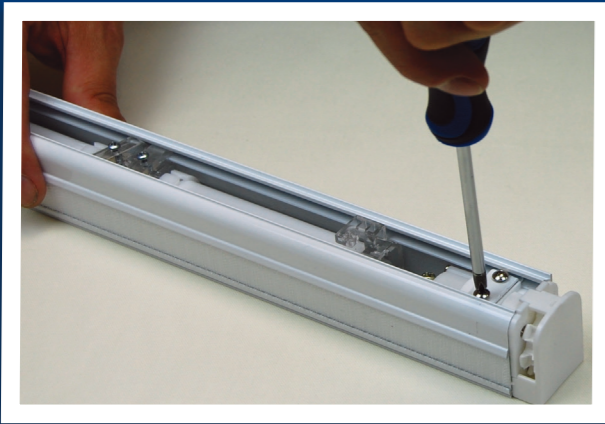
**2.** Cut the headrail to your required width and file to make sure there are no sharp edges, then cut your axle rod 17mm less than the headrail.



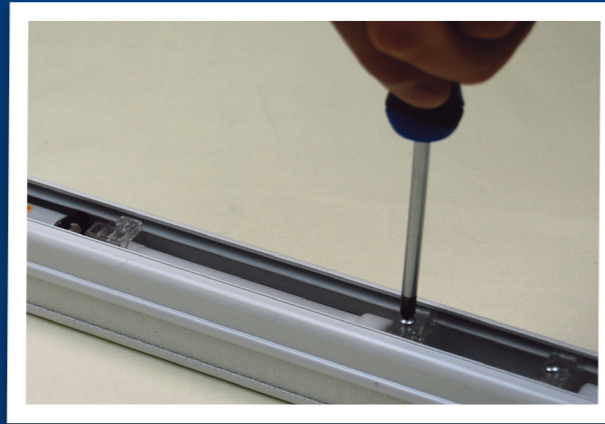
**3.** Connect the axle rod to the gear housing and tighten the screw with a Phillips screwdriver.



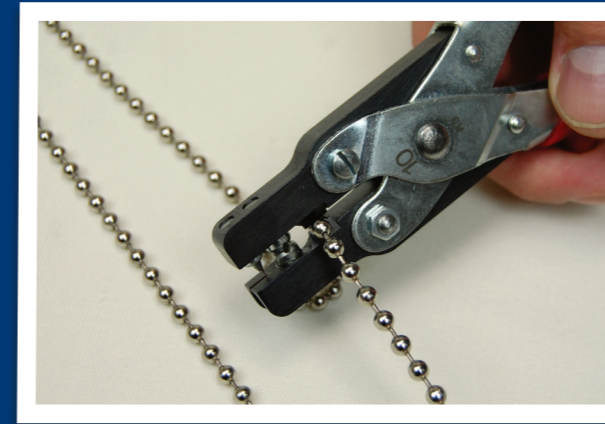
**4.** Once you have chosen the side you wish to operate your blind from, insert each spool onto the axle rod ensuring the cord guides always face toward the outside. Slide each spool inside the headrail before finally fitting the gear housing to the end.



**5.** To secure the gear housing to the headrail ensure both screws have been loosened off on the bridge so it slides into the channel inside the headrail. Push completely in then tighten up both screws on the bridge to secure in place.



**6.** Firmly tighten the bridge screw on each spool to hold in place.



**10.** Using the chain joining pliers (0679) split your existing chain.



**11.** Measure your chain to the correct size, and cut off any excess chain.



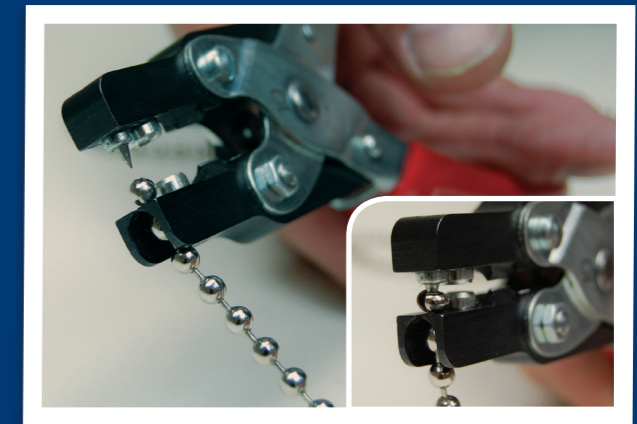
**7.** Take your cord and tie a knot in one end (fig 1) then attach to one of the grooves on the barrel of the spool and pull tight ensuring its securely held in place (fig 2).



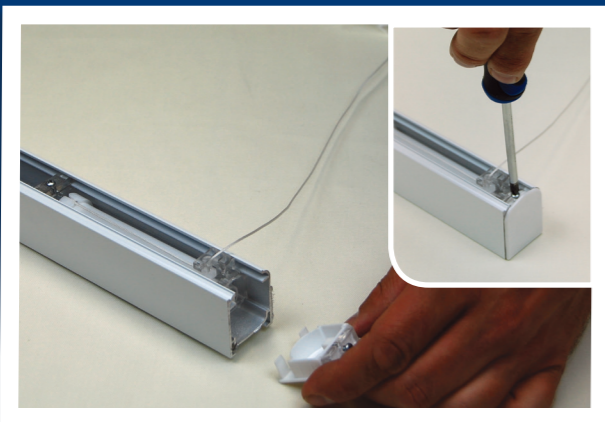
**8.** Feed the cord through the guide at the opposite side. Repeat for the remaining spools.



**12.** Place one of the ball's in the cut out on the lower jay of the pliers. Firmly press down until the ball splits open halfway. Remove the chain from the pliers and place the opposite end in and firmly press down until this splits completely in half and falls away from the chain.



**13.** Place the end of the chain with the ball that is split halfway open. Carefully insert the pin from the opposite end of the chain ensuring it sits neatly inside the half open ball.



**9.** Attach the end cap to the opposite end to the gear housing, undo the screw slightly then slide into position and tighten firmly.

**If you are using a standard white plastic chain use the appropriate set size loop as these cannot be re-joined skip to STEP 15 otherwise continue the guide which shows you how to cut and re-join your choice of metal chain to your chosen size.**



**14.** Firmly press the pliers to close the ball and re-join the chain.



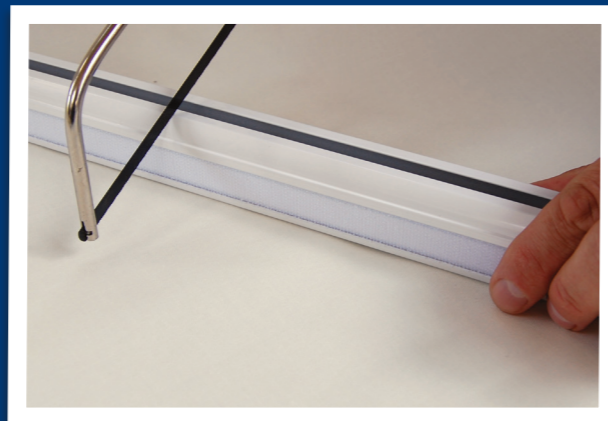
**15.** Connect your chain to the gear housing then align the two tabs at the top of the gear housing with the ones on the end cap and push into place at the bottom.

# how to

## Assemble your **Motorised** Professional Roman Blind from Components



**1.** Measure and mark off the headrail deducting 4mm from your finished blind size, this is to take into account the end caps.



**2.** Cut the headrail to your required width and file to make sure there are no sharp edges, then depending on the number of spools you have in your blind you need to make the following allowances when cutting your axle rod to size.



### For blinds with an **EVEN** number of spools

**3.** If your blind size is 120 you need to deduct 20cm from the total length of your axle rod to allow room for the motor. Once cut to size you then need to cut your axle rod exactly in half.

### For blinds with an **ODD** number of spools

**3.** If your blind size is 120 you need to deduct 20cm from the total length of your axle rod to allow room for the motor. Once cut to size you then need to make sure one axle rod is 15cm longer than the other to allow you to offset the motor and ensure even spacing of the spools.



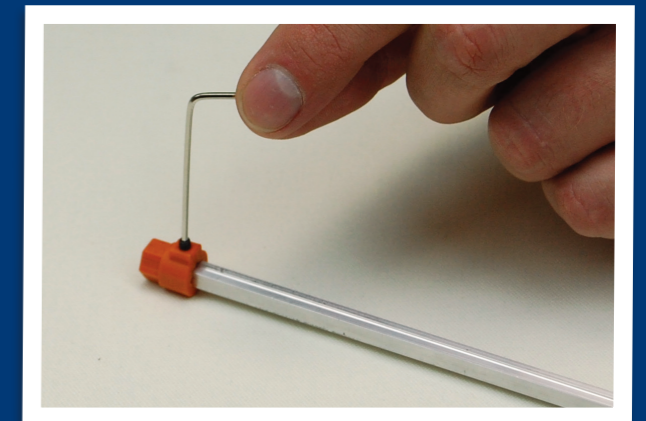
**4.** Take the motor and attach a headrail adaptor onto each side of the motor ensuring it faces the correct way.



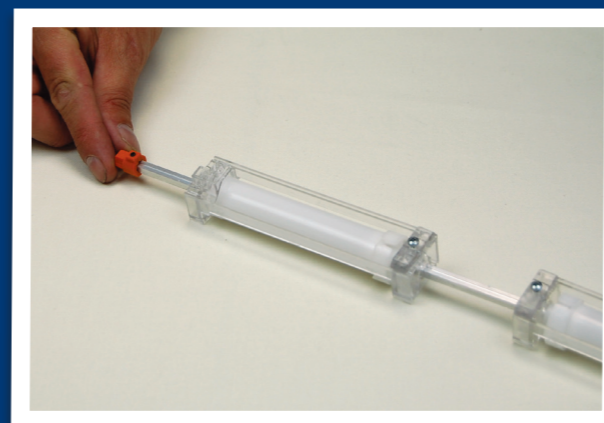
**5.** Slide the motor inside the headrail.



**6.** If you have an even number of spools then the motor needs to be in the centre, for an odd number you will need to offset slightly.



**7.** On the inside of each axle rod you will need to connect an axle rod adaptor and tighten using a 2mm allen key.



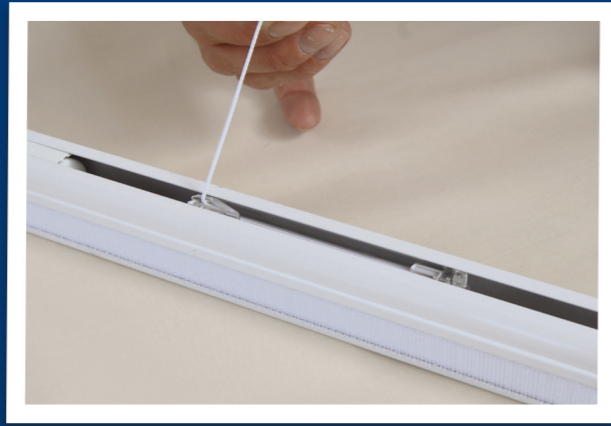
**8.** Slide the spools onto the axle rod making sure they cord guide always faces towards the outside.



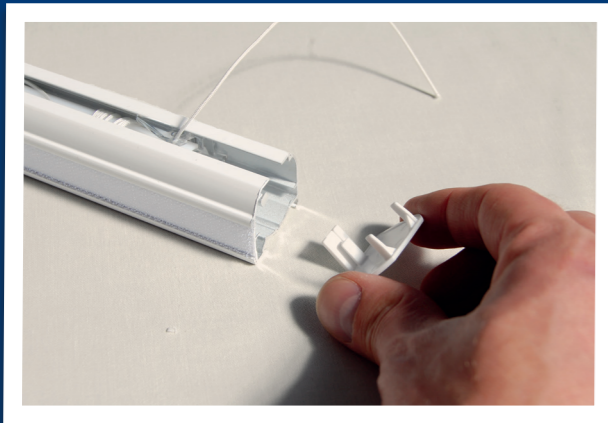
**9.** Slide the spools completely inside the headrail and push each of the axle rod adaptors inside the motor firmly as far as they go.



**10.** Ensure that the cord attached to the grey button isn't protruding from the open end and push down firmly.



**11.** Feed the cord through the guide at the opposite side. Repeat for the remaining spools.

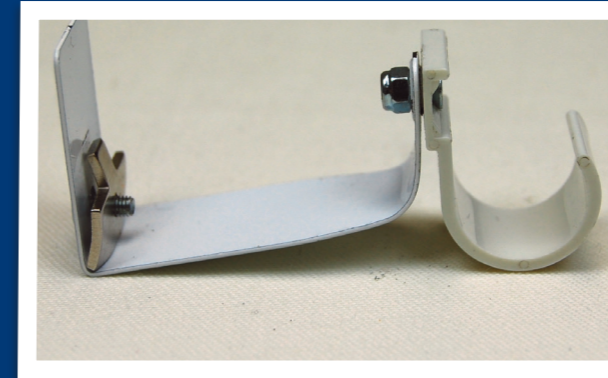


**12.** Attach the end cap to each side of the headrail and push firmly to ensure remains in place.

## Mounting your battery tube

There are two methods of mounting your battery tube, either directly onto the headrail or top mounted onto the ceiling.

### Attach directly to the headrail



**1.** Attach the bracket which is supplied with battery tube to the headrail bracket (item no. EL566) tighten using the nut and bolt to secure.



**2.** Attach the assembled bracket to the back of the headrail making sure it faces downwards.



**3.** Space the brackets evenly apart ensuring the battery tube fits onto the brackets.

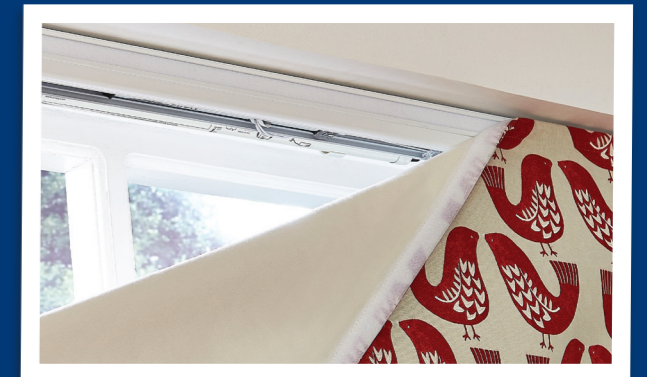


**4.** Connect the battery tube to the motor to complete your assembly.

### Attach to the ceiling or inside recess



**1.** Fix the battery bracket which is supplied with the battery tube to the ceiling behind where you intend to mount your blind. Space the brackets 30cm apart to ensure either the replaceable or rechargeable the battery tube fits.



**2.** Sit the battery tube into the brackets ensuring it sits central. Connect the battery tube to the motor once you have mounted your blind to complete your assembly.

HALLIS HUDSON

how to..



## New Linings Creating a Buzz This Month

Curtains or blinds can create real impact in a scheme and the right lining has the ability to enhance your chosen style. It's the reason why Hallis offer an extensive range of linings, to help you create the perfect window dressing with a sophisticated finish and this month we are delighted to announce the arrival of 2 new additions!



### **NEW Finesse Luxe Satin, H646**

Our new **Finesse Luxe Polycotton Satin, H646** is available in our 2 most popular colours Pearl and Ivory.

A lining with a beautiful drape, this lustrous high density, polycotton blend combines the softness and handle of cotton with the practical benefits of polyester. Its crease resistance, shape retention and durability make it a joy to work with and make the finished project looking fresh and beautiful.



*If you currently buy our H640 we think you'll love the new Finesse Luxe Satin.*

### **NEW Chalk available in Finesse Premium Satin, H652**

As modern life gets busier our homes have become our sanctuaries and the popularity of calming colours has increased. To complement this we've introduced a new Chalk colour to one of our most popular linings, Premium Satin, H652.

The cooler tones of our new **Chalk Finesse Premium Satin, H652** make it the perfect partner for soothing greys, blues and cool greens.



*Chalk is a great universal colour, if you prefer to stock just one colour of lining this could be the one for you, as it sits with a variety of fabric colours.*

## Make life easier with Hallis Polycotton Satins...

Hallis Polycotton Satins are the perfect choice with their natural crease resistancy making every job easier by cutting down on the amount of ironing needed after makeup, helping you get the job done efficiently every time.

To order a **free feeler sample** or to order the lining please contact our Sales Team.

Our full range of linings are available as a sample book costing £10 which can be ordered using Item No **BOOK/LININGS**. Remember that **halliswebshop.com** features the most up to date details on all of our latest products including all of our linings.



*Fabrics and Linings featured from top: iLiv Mistral Ivory from Dimensions & iLiv Cirrus Cream Voile Plains & Textures Book 5, Finesse Luxe Pearl and Ivory (H646/PEARL/PR or PC & H646/IVORY/PR or PC), Premium Satin Chalk (H652/CHALK/PR or PC)*