

# Professional Roman Blind System

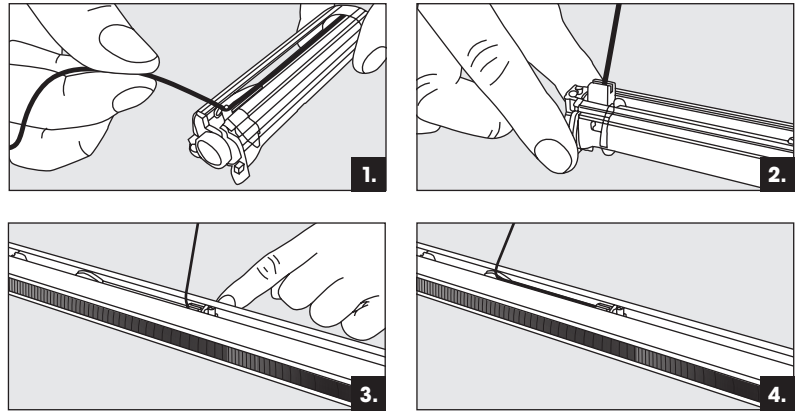
## Converting your Chain Operated blind to Dual Rise

HALLIS HUDSON

**DUAL RISE**  
the ultimate child safe solution

### how to... adjust your spools...

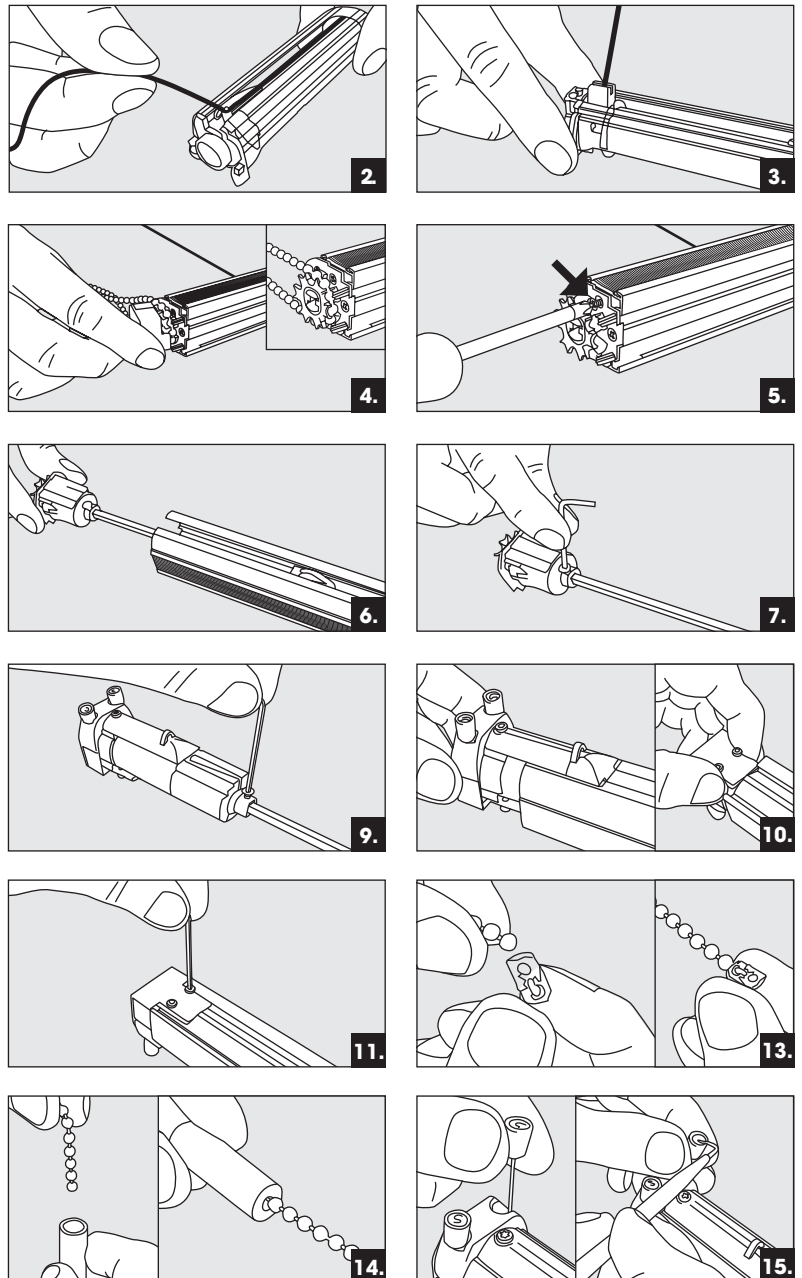
- Step 1.** Ensure the cords are fully unwound.
- Step 2.** Remove the cord from the cord guide.
- Step 3.** Pull the grey button..
- Step 4.** Re-position your spool and push each grey button down to lock them into place.
- Step 5.** Re-attach the cord to the cord guide, at the opposite end of the spool.



**IMPORTANT:** please check all grey buttons have been pushed down and the cord is attached to the cord guide before operating your blind.

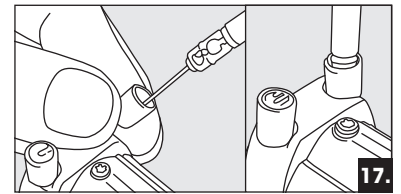
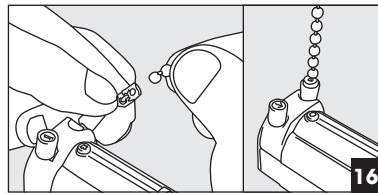
### how to... change your standard gear housing to Dual Rise...

- Step 1.** Ensure the cords are fully unwound.
- Step 2.** Remove the cord from the cord guide.
- Step 3.** Pull the grey button up.
- Step 4.** Remove the quick release end cap and chain from your gear housing.
- Step 5.** Unscrew the screw to release the gear housing from the headrail cord.
- Step 6.** Pull the gear housing out from the headrail enough for you to access the screw which connects the axle rod to the gear housing.
- Step 7.** Take the allen key provide with the blind and unscrew until loose enough to be able to remove the gear housing from the axle rod.
- Step 8.** Cut the axle rod down by 6cm to accomodate the larger Dual Rise mechanism.
- Step 9.** Push the axle rod into the Dual Rise gear housing and tighten the screw using a T10 Torx allen key or screwdriver.
- Step 10.** Turn the headrail over and lift up the flap on the underside of the gear housing to allow it to slide over the top of the profile.  
*Chain Operation only, if using wand skip to step 15.*
- Step 11.** Push the gear housing firmly into the headrail and tighten both screws using a T10 Torx allen key or screwdriver.
- Step 12.** Re-position the cords, press down the grey buttons and replace the cords into the cord guides.
- Step 13.** Cut both your front and back chain to the desired length (we recommend the front chain 4cm shorter) and insert one end into the ball chain stopper.
- Step 14.** Insert the other end of the chain through the cord pull, repeat for the second chain.
- Step 15.** Using a pick or similar pull the white cap off from one of the dual rise pull cords to reveal the ball chain clamp.



Step 16 continued overleaf

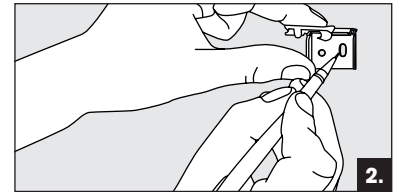
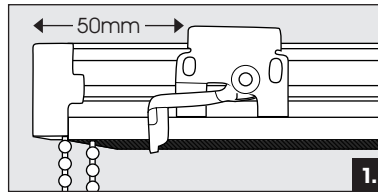
**Step 16.** Attach one of the chains/wands to the ball clamp ensuring it's securely held in place before returning the white cap.



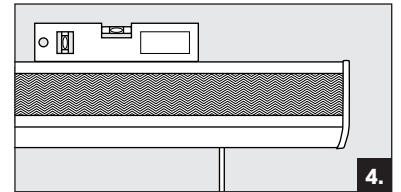
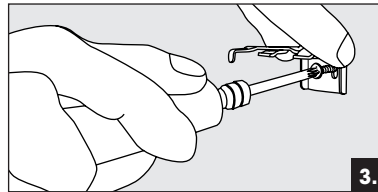
**Step 17.** Repeat Step 15 & 16 onwards if you are using a wand instead of a pull cord.

## how to... install...

**Step 1.** The brackets should be positioned approximately 50mm in from the end of the headrail and evenly spread across the width of the blind.

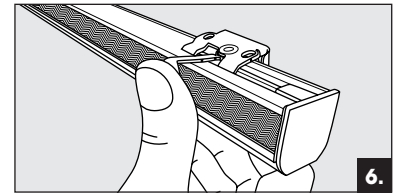
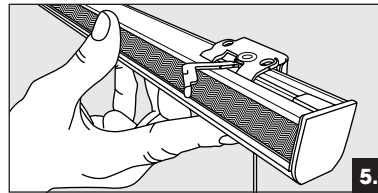


**Step 2.** Place the brackets in the desired position and mark the surface you are attaching to through the screw holes.



**Step 3.** Fix the brackets in place with the appropriate fixings for the type of surface.

**Step 4.** Use a spirit level to check and adjust the position of the brackets before fully tightening the screws.

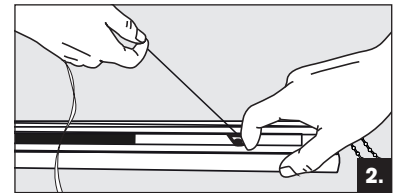
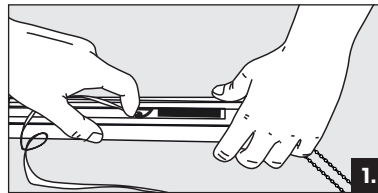


**Step 5.** Hold the headrail up to the brackets, tilt forward and insert onto the brackets then tilt back until level.

**Step 6.** Once firmly in position press the lever until the headrail is locked in place.

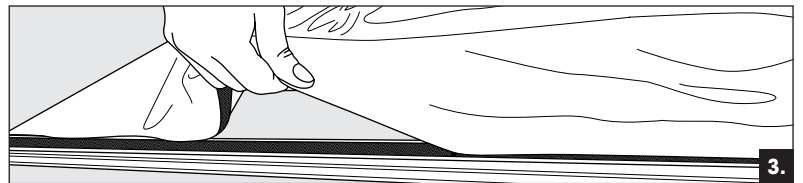
## how to... attach the blind...

**Step 1.** Slide the spools into the desired position.



**Step 2. Fully unwind all** the cord from the spools.

**Step 3.** Attach the blind using hook and loop tape and press firmly into position.



### WARNING!

Young children can be strangled by loops in pull cords, chains, tapes and inner cords that operate the product.

To avoid strangulation and entanglement, keep cords out of the reach of young children.

Cords may become wrapped around a child's neck. Move beds, cots and furniture away from window covering cords.

Do not tie cords together. Make sure cords do not twist and create loops.

