

Professional Roman Blind System



Gear Housing Chain Breakaway Instructions (child safety compliant)

how to... remove your existing gear housing...

Step 1. Remove the quick release end cap and chain from the gear housing.

Step 2. Using a Pozi screwdriver (not a Phillips screwdriver), remove the top screw only - which will release the gear housing from the headrail.

Step 3. Pull out the gear housing from the headrail just enough to access the screw which connects the axle rod to the gear housing.

Step 4. Use the Allen key to loosen the screw and remove the gear housing from the axle rod.

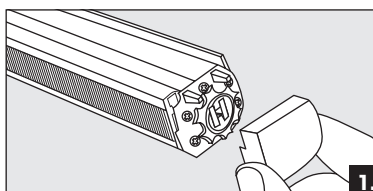
Tools you will need...



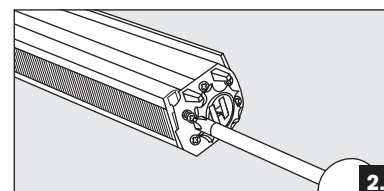
2mm Allen Key



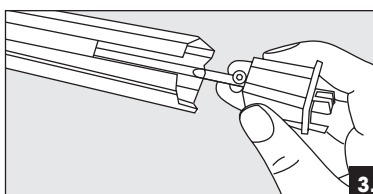
Pozi Screwdriver



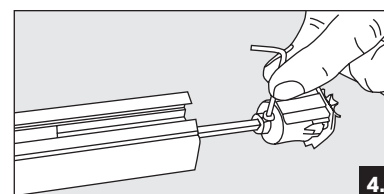
1.



2.



3.



4.

how to... fit your new chain breakaway...

Please be aware when fitting this breakaway device that it will increase the finished width of the blind by 3mm. If any adjustments are required in order for the blind to fit inside your recess please deduct it from the headrail

Step 1. Attach the gear housing to the axle rod, ensuring that it is fully inside the gear housing then tighten with the Allen key.

Step 2. Place the gear housing inside the headrail and tighten the top screw with the Pozi screwdriver, ensuring it's securely held in place.

Step 3. Snap the cog in place on the main body of the gear housing, ensuring the cog side faces inwards.

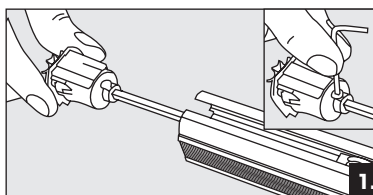
Step 4. Attach the end cap to the gear housing by snapping into place.

Step 5. Take your chosen chain and place it onto the wheel on the bottom section of the breakaway, ensuring it sits correctly in the teeth of the wheel.

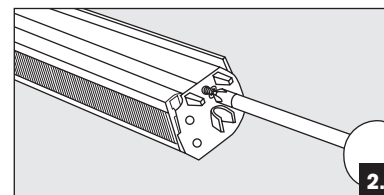
Step 6. Place both sections of the breakaway together and hold in place to check that the chain sits correctly and spins freely as it is pulled.

Step 7. Insert the screw and tighten with a Pozi screwdriver.

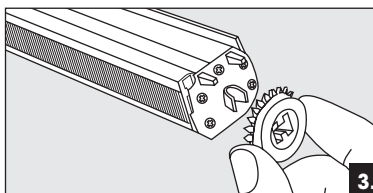
Step 8. Finally, push the bottom section with the chain installed into the top section attached to the headrail, ensuring the arrow on the top and bottom section line up.



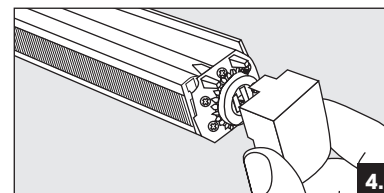
1.



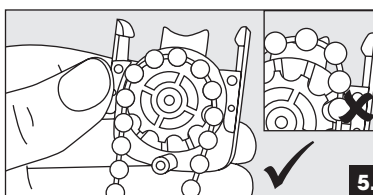
2.



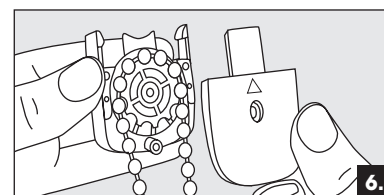
3.



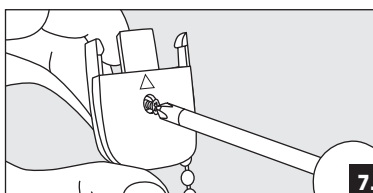
4.



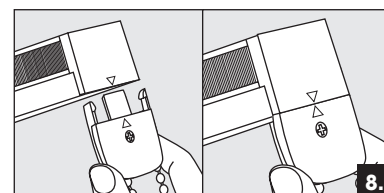
5.



6.



7.



8.



— HALLIS HUDSON —
Committed to excellence