

# Monogram Motorised Roller/Roman

## Complete Programming

*how to...*

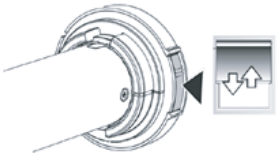
### Reset & Program your motor



See our instructional video here on how to program your motor.

#### 1. Putting additional blinds into SLEEP MODE (Only required if you have multiple blinds to program or already have blinds on site)

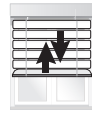
if you programming multiple blinds or already have blinds installed you will need to place all other blinds into SLEEP MODE except the blind you wish to program. To do this, follow the steps below.



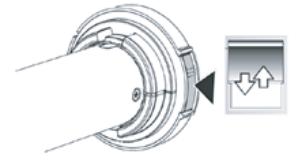
Press and hold the motor head program button or in the case of the Luxury motor use a paper clip to push the smaller button until the blind jogs once



Press and hold UP, DOWN and MY button together until the blind jogs once. The blind is now in sleep mode.



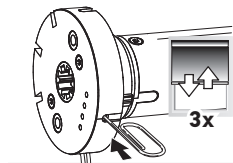
You can then program the blind you are installing. Once complete you can then take all other blinds out of sleep mode.



To take the blind out of SLEEP MODE quickly press and release the program button, the blind will jog once to confirm

#### 2. Putting your blind into programming mode...

Only connect the motor that should be programmed to power. When programming a multi channel control, choose channel first.



Press and hold button on the motor. Motor jogs 3 times... first after 2 sec, after 7 sec and after 12 sec. → OK

When using a multi channel handset please ensure you select the appropriate channel before continuing to program your blind. This step is not applicable to single channel remotes.



Press the circle button until the light indicator is lit for your chosen channel

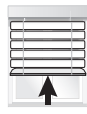


Press and hold UP and DOWN until the motor jogs

#### 3. Check the motor direction...



or



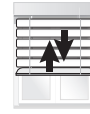
if OK, follow step 4

if **NOT** OK, follow step 3

#### 4. If you need to change the motor direction...



2 sec.



Press and hold MY until the motor jogs

#### 5. Place the blind in the desired UP position...

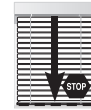


Press and hold UP until the blind is at the desired top position

#### 6. Set the DOWN position...



Press then release MY and DOWN together



Blind goes down, must press stop before the blinds reaches the bottom

#### 7. Set the UP position...



Stop near desired down position



Adjust to desired down position



Press then release MY and UP together



The motor moves upwards and stops at the UP position



## 7. Confirm end limit setting...



2 sec.  
Press and hold MY until the motor jogs

## 8. Record an RTS transmitter...



Press and release the programming button on the back of the remote... motor jogs to confirm limits are locked and setup is complete  
**\*Do not press and hold.**

*how to...*

## adjust the Top and Bottom limit



1.  
Place the blind in the **DOWN position**



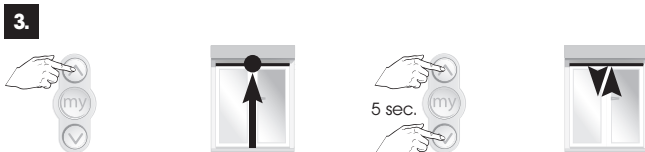
5 sec.  
Press then release UP and DOWN until the motor jogs



2.  
Choose a new **down** position



2 sec.  
Press MY to stop blind at new down position, then press and hold MY until motor jogs



3.  
Place the blind in the **UP position**



5 sec.  
Press and hold UP and DOWN until motor jogs



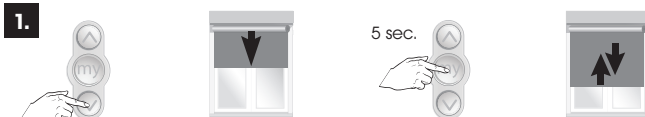
4.  
Choose a new **up** position



2 sec.  
Press MY to stop blind at new down position, then press and hold MY until motor jogs

*how to...*

## set 'My' position



1.  
Place the blind in the desired position



5 sec.  
To confirm new MY position press MY until motor jogs

## adjust 'My' position

Repeat procedure to a new desired position

*how to...*

## remove programmed 'My' position



1.  
Place the blind in the MY position



2.  
Hold MY for 5 seconds until motor jogs