

MONOGRAM CONTOUR BRACKET ROLLER BLIND FITTING INSTRUCTIONS

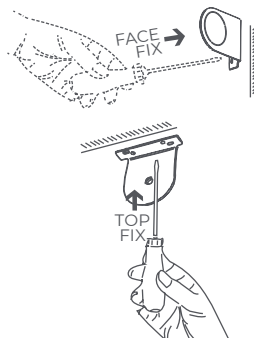
PREPARATION

- 1 The screws we've provided are for wood use only. If you are fitting into a wall or lintel, you will require different screws and rawl plugs.
- 2 Decide how the brackets will be fitted. Options are: Top fix or face fix as shown in Fig. 1 (Top fix is typically used for ceiling and lintel recess fitting. Face fix is commonly used for wall or window frame fitting).
- 3 Identify the side of the blind that contains the control chain, it should be fixed to the bracket that has a "+" shape located in the middle (B2). The opposite end with a single pin in the middle is known as the "Idle End" and is fixed to the bracket with the small hole in the middle (B1).
- 4 Put each bracket on the end of the blind. Mark the outside edge of the brackets, see Fig. 2. Remove the blind from the brackets and place only the brackets back at the marked position. With a pencil, mark the holes inside the brackets.
- 5 Fix the brackets into position with the correct fixing type.

FITTING THE BLIND

- 1 Hold the blind up to the brackets with the fabric hanging to the back of the roller tube. Please note, if

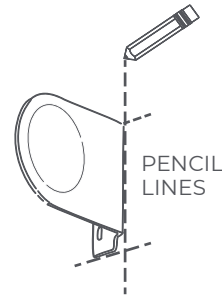
Fig. 1



the blind has been ordered as a reverse roll, the fabric should hang over the front of the roller tube.

- 2 Push the idle end of the roller blind into the bracket with the small hole in the middle (B1). You will notice this presses in towards the bracket.
- 3 Fit the control end into the opposite bracket (B2) by placing the hook on the blind into the vertical part of the bracket marked with the "+" shape. Allow the hook to drop downwards, securing the blind into the brackets. The spring tension in the idle end will ensure a snug fit.

Fig. 2



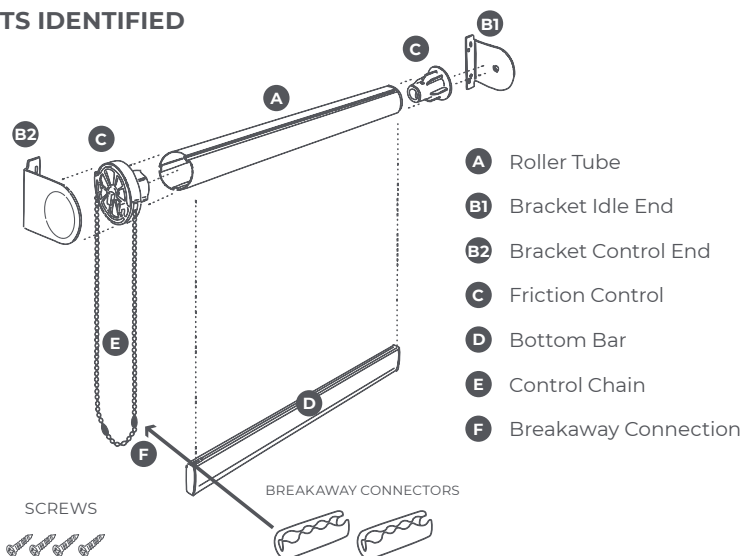
OPERATING YOUR BLIND

Pull the chain to raise and lower the blind. Ensure you do not continue pulling the chain once the blind is fully retracted as this will damage the blind.

HOW TO REMOVE THE BLIND FOR CLEANING

Make sure the blind is fully up. Push the roller tube towards the idle end. The spring tension will allow the blind to slip out of the brackets.

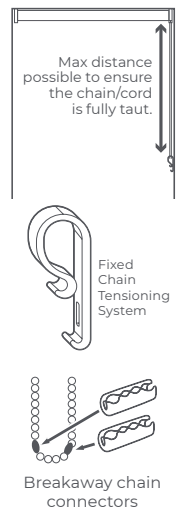
PARTS IDENTIFIED



SAFETY DEVICE

Depending on the size of blind you've ordered, we'll either send you a blind with two breakaway chain connectors attached or we'll supply a child safety device.

The breakaway chain connectors will pop apart if any weight is applied to the chain. If a child safety device is provided, ensure this is added to the chain and securely fixed to the wall at the maximum distance (making the chain fully taut).



TOOLS REQUIRED



BLINDS CHILD SAFETY AWARENESS

Keep all cords and chains out of the reach of children. Loose cords or chains should never be tied together.