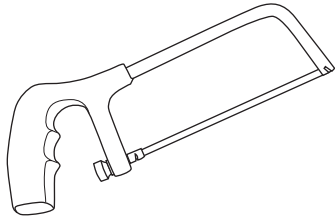


# Welcome to the next level in Roman Blinds... Elite by Hallis

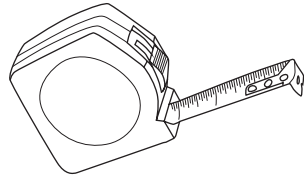


## Fitting Instructions

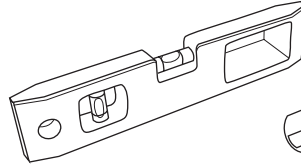
### Tools you will need...



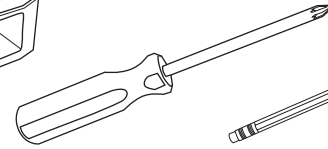
Hacksaw



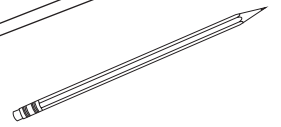
Tape Measure



Spirit Level



Screwdriver



Pencil

### how to... shorten the headrail...

**Step 1.** Move the spool along the profile until you have sufficient space to measure and cut to the desired width.

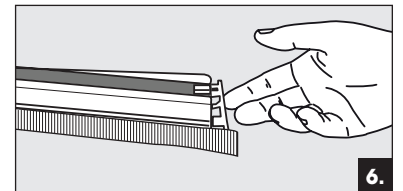
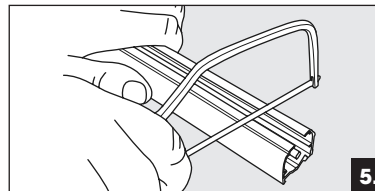
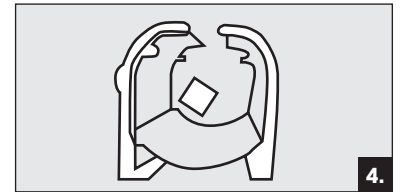
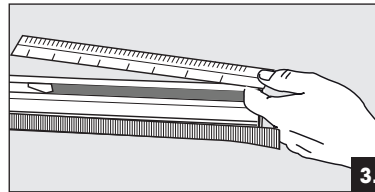
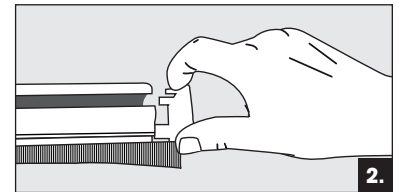
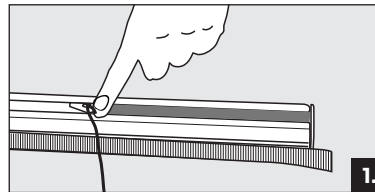
**Step 2.** Remove the end cap from the opposite end to the gear housing, this is the end of the profile you will be cutting.

**Step 3.** Measure and mark off the required width of the blind.

**Step 4.** Position the profile and axle rod.

**Step 5.** Cut down the profile and axle rod with a hacksaw.

**Step 6.** Replace the end cap.



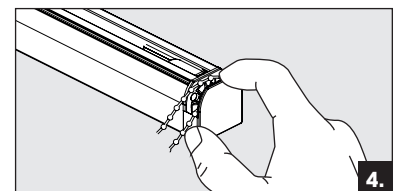
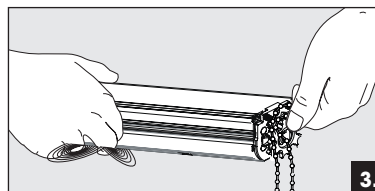
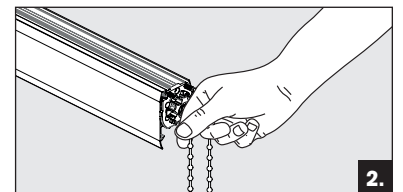
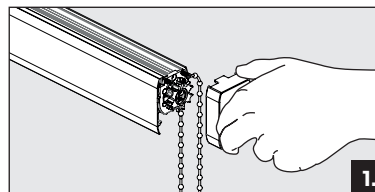
### how to... remove and replace the chain...

**Step 1.** Remove the quick release end cap from the gear housing.

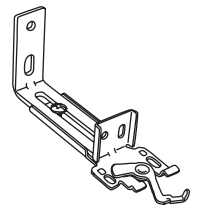
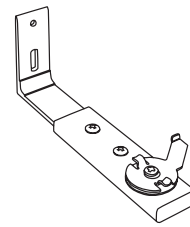
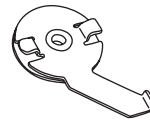
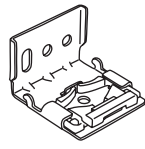
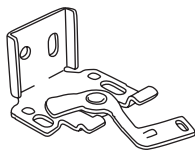
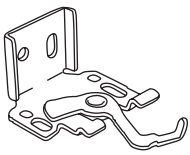
**Step 2.** Remove the current chain and replace with your chosen chain (size No. 10).

**Step 3.** Ensure the chain sits neatly within the housing.

**Step 4.** Re-fit the quick release gear housing cover ensuring it's firmly attached.



— HALLIS HUDSON —  
Committed to excellence



## how to... install...

**Step 1.** The brackets should be positioned approximately 50mm in from the end of the headrail and evenly spread across the width of the blind.

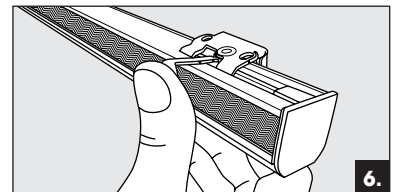
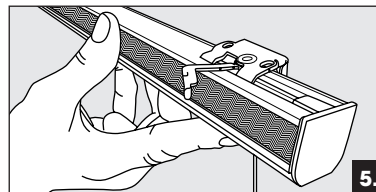
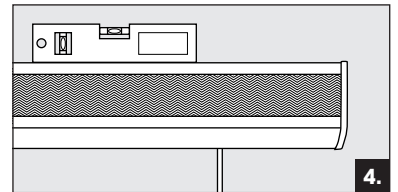
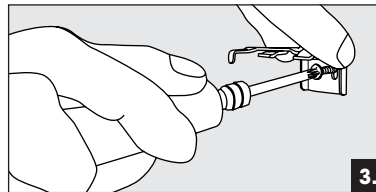
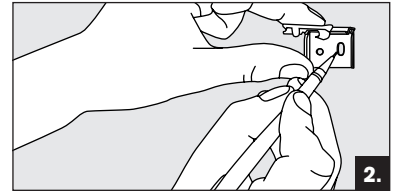
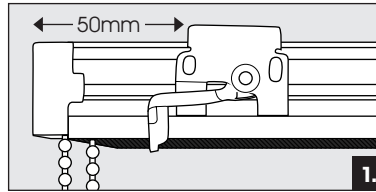
**Step 2.** Place the brackets in the desired position and mark the surface you are attaching to through the screw holes.

**Step 3.** Fix the brackets in place with the appropriate fixings for the type of surface.

**Step 4.** Use a spirit level to check and adjust the position of the brackets before fully tightening the screws.

**Step 5.** Hold the headrail up to the brackets, tilt forward and insert onto the brackets then tilt back until level.

**Step 6.** Once firmly in position press the lever until the headrail is locked in place.



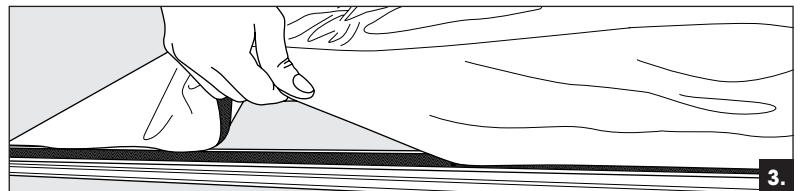
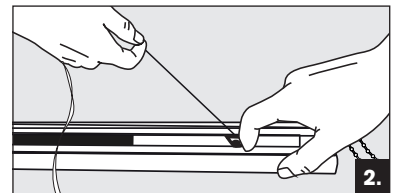
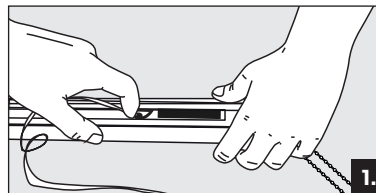
## how to... attach the blind...

**Step 1.** Untighten the screws on the bridge of your spool

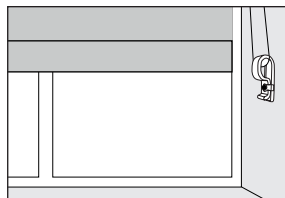
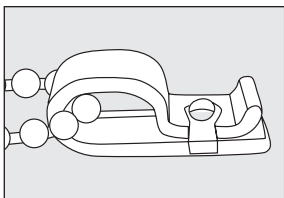
**Step 2.** Slide the spools into the desired position.

**Step 3.** Re tighten the screws on the bridge of the spools ensuring they are firmly fixed into place.

**Step 3.** Attach the blind using hook and look tape and press firmly into position.

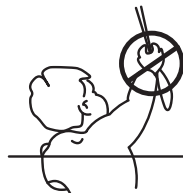


## Fixed Tension Device child safety requirements ...



### WARNING!

Young children can be strangled by loops in pull cords, chains, tapes and inner cords that operate the product. To avoid strangulation and entanglement, keep cords out of the reach of young children. Cords may become wrapped around a child's neck. Move beds, cots and furniture away from window covering cords. Do not tie cords together. Make sure cords do not twist and create loops.



### Specific warning for non-integral devices

Children can strangle if this safety device is not installed. Always use this device to keep cords or chains out of reach of children.

## Safety device fitting instructions...

**Note** The fixed retaining safety device must be installed at the maximum distance possible from the control mechanism to ensure that the chain remains taut.

**Step 1.** Screw the safety device to the wall using appropriate fixings for the surface you are fitting to.

**WARNING!** The distance from the floor to the bottom of the chain must be AT LEAST 150cm. Children can strangle if this safety device is not installed.

**Step 2.** Ensuring that the chain remains taut, place the chain into the safety device.

**Step 3.** Having checked that the bottom of the chain is at least 150cm from the floor, replace the safety device cover.

**Step 4.** Warning labels must be left on the chain for the notice of the end user.

# Motorised Roman Blind

## Complete Programming

*how to...*

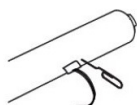
### Reset & Program your motor



See our instructional video here on how to program your motor.

#### 1. Putting your blind into programming mode...

Only connect the motor that should be programmed to power. When programming a multi channel control, choose channel first.



Press and hold button on the motor. Motor jogs 3 times... first after 2 sec, after 7 sec and after 12 sec. → OK

When using a multi channel handset please ensure you select the appropriate channel before continuing to program your blind. This step is not applicable to single channel remotes.

Press the circle button until the light indicator is lit for your chosen channel



Press and hold UP and DOWN until the motor jogs

#### 2. Check the motor direction...



or



if OK, skip to step 4

if **NOT** OK, follow step 3

#### 3. If you need to change the motor direction...



2 sec.



Press and hold MY until the motor jogs

#### 4. Place the blind in the desired UP position...



Press and hold UP until the blind is at the desired top position

#### 5. Set the DOWN position...



Press then release MY and DOWN together

Blind goes down, must press stop before the blinds reaches the bottom

Stop near desired down position

Adjust to desired down position

#### 6. Set the UP position...



Press then release MY and UP together



The motor moves upwards and stops at the UP position

#### 7. Confirm end limit setting...



2 sec.



Press and hold MY until the motor jogs

#### 8. Record an RTS transmitter...



Press and release the programming button on the back of the remote... motor jogs to confirm limits are locked and setup is complete

how to...

## test if your blind is in roman mode

Raise your blind to the top, press and hold the down button.

If your blind doesn't reach the bottom then follow instructions below to set the blind into roman mode.

1.



Place the blind half way down

2.



5 sec.



Press and hold UP and DOWN  
until the motor jogs

3.



2 sec.



Press and hold MY and DOWN  
until the motor jogs

Test that the blind is now working  
as expected



— HALLIS HUDSON —  
*Committed to excellence*